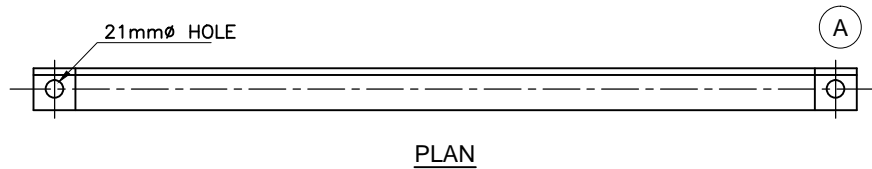


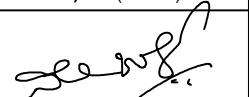
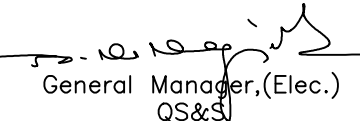


**NOTES:-**

1. ALL HOLES ARE 18mm  $\phi$  FOR 16mm  $\phi$  BOLTS UNLESS OTHERWISE SPECIFIED.
2. ALL SLOTTED HOLES ARE OF 18x35mm LONG.
3. CLAMPS TO BE SELECTED DEPENDING UPON TYPE OF POLES USED.



Signatures		All dimensions are in mm unless otherwise stated.	 <b>BESCOM</b>
Chd	 AGM (QS&S)	<b>DETAILS OF 11KV SINGLE TOP SUPPORT &amp; HORIZONTAL X-ARM</b>	Approved:
Sub	 DGM (QS&S)		 General Manager, (Elec.) QS&S
SCALE: N.T.S			DRG.NO.BESCOM/GM/QS&S/04 REV-002 DATED:24-11-2018