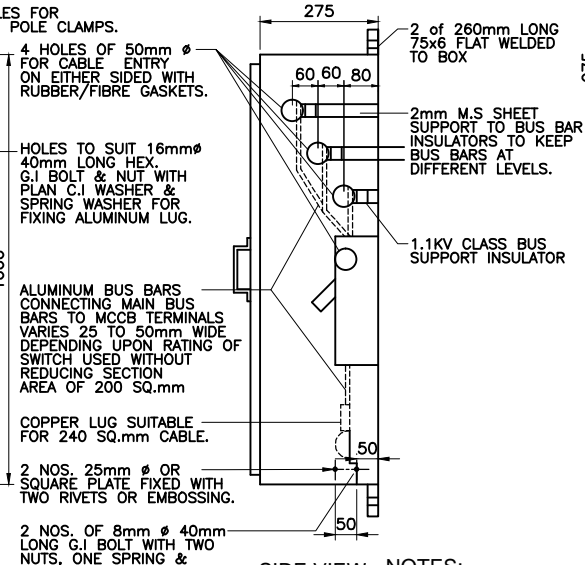
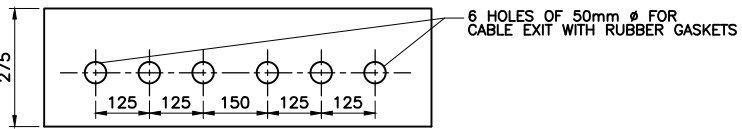


FRONT VIEW WITHOUT DOORS



SIDE VIEW



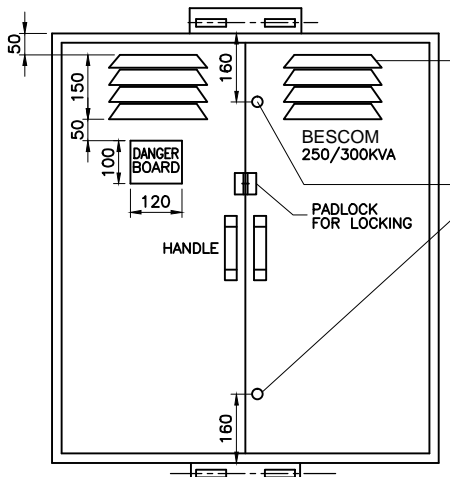
VIEWED FROM BOTTOM

BILL OF MATERIALS

SL. NO	PARTICULARS	QUANTITY	REFERENCE STANDARD
1	MOULDED CASE CIRCUIT BREAKER 60 KA (REPUTED MAKE) 250A	2 NOS.	IS-8828 & IS-13947
2.	EC GRADE EQ ALUMINUM BUS BARS WITH PVC INSULATED TOUGHENED/COMPOUND INSULATION COATING a) MAIN BUS BARS 50x10mm b) CONNECTION LINKS 30x10mm	3 NOS. 12 NOS.	
3.	BUS SUPPORT INSULATORS 1.1KV CLAES	12 NOS.	
4.	M.S SHEET 2mm		
5.	PAINT: ADMIRAL GREY		IS-5
6.	DANGER BOARD 120x100mm	1 NO.	IS-2551
7.	GI BRASS BOLTS & NUTS FOR TERMINATION	12 NOS.	
8.	ALU-CU.BI METALLIC WASHERS	24 NOS.	
9.	SPRING WASHERS.	12 NOS.	

NOTES:-

1. ALL DIMENSIONS ARE IN mm ONLY.
2. BOX SHALL BE MADE OUT OF 2mm SHEET, DEGREE OF PROTECTION AS PER IP-53.
3. THE DOOR SHALL HAVE INTER LOCKING ARRANGEMENT WITH SPRING LOADED LATCH OPERATED BY A COMMON KEY FOR ALL THE BOXES.
4. ALL M.S. BOLTS & NUTS PLAIN & SPRING WASHERS SHALL BE GALVANISED BY HOT DIP OR ELECTRO PLATED PROCESS.
5. EARTHING MUST BE DISTINCTLY INDICATED BY METALLIC LABEL OR EMBOSSED.
6. CABLE ENTRIES AND OUTLETS ARE OF 50mm Ø HOLES COVERED WITH 2mm THICK M.S. SHEET SQUARE PLATES.
7. RIGOROUS RUST PROOFING PROCESS (3 IN 1 TREATMENT), DEGREASING, DERUSTING AND PHOSPHATING SHALL BE CARRIED OUT ON THE METAL BEFORE AND AFTER FABRICATION OF THE BOX AND BEFORE SPRAY PAINTING.
8. THE DOORS SHALL BE OF SELF CLOSING TYPE WITH SPRING ARRANGEMENT.




FRONT VIEW

4 NOS. LOUVERS PRESSED OUT OF THE BOX. (FRAME WORK OF M.S SHEET WITH WELD MESH OR PERFORATED SHEET TO BE TACK WELDED ON BACK SIDE OF LOUVERS)

2 NOS. OF LATCH OPERATED LOCK

MANUFACTURE'S NAME & ADDRESS	
KVA	TYPE
VOLTS	P.O.NO.
AMPS.	S.NO.

TYPICAL NAME PLATE DETAILS

	Signatures	All dimensions are in mm unless otherwise stated.	 BESCOM Approved:
Chd	<i>[Signature]</i> AGM (QS&S)	DETAILS OF L.T DISTRIBUTION BOX SUITABLE FOR 250/300 KVA TRANSFORMERS USING MCCB	
Sub	<i>[Signature]</i> DGM (QS&S)		
SCALE: N.T.S			DRG.NO.BESCOM/GM/QS&S/08 REV-002