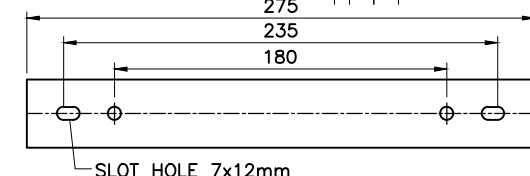
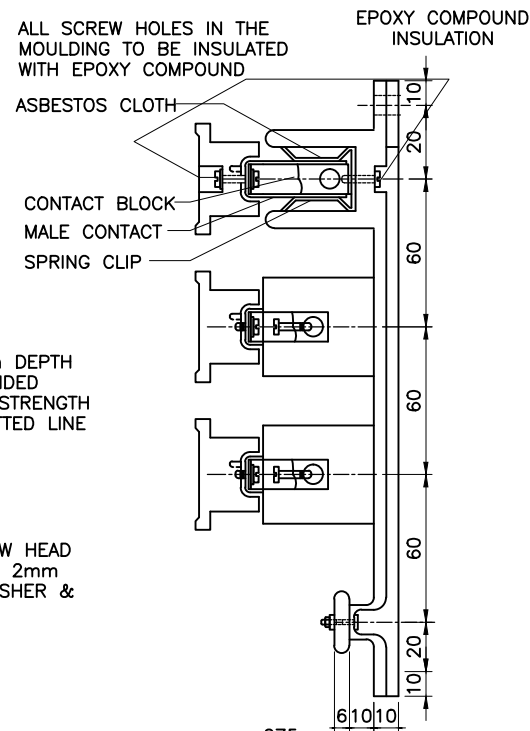
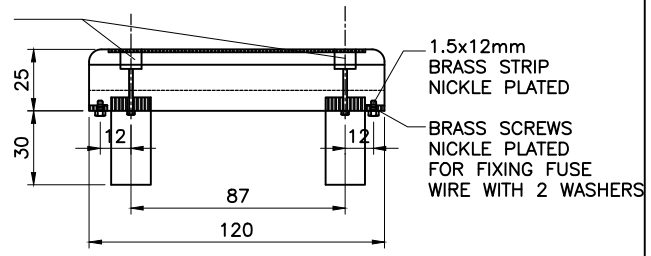


M-6 25mm SCREW HEAD BOLT & NUT WITH 2mm THICK DOUBLE WASHER & SPRING WASHER TO FIX NEUTRAL BAR TO BOARD

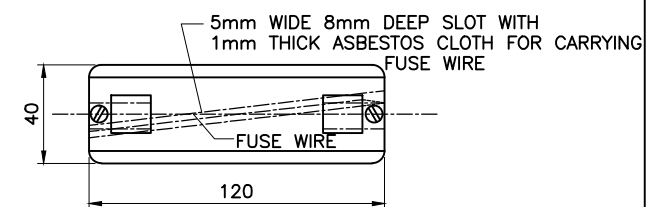
**ELEVATION OF AERIAL FUSE BOARD**  
(One top channel removed)



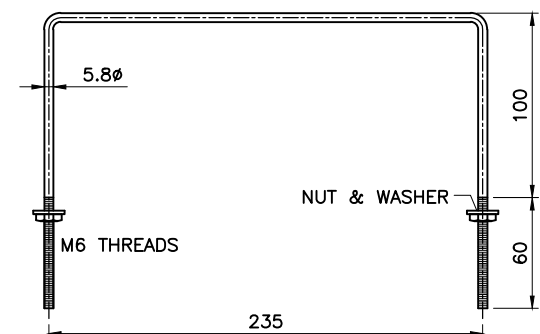
**U-CLAMP FIXING PLATE**  
(Mat:M.S Thick: 3mm Qty. 2 Sets)



**ELEVATION OF FUSE CARRIER**



**VIEW FROM BOTTOM OF FUSE CARRIER**



**DETAILS OF U-BOLT FOR FIXING BOARD**  
(Mat:-ENIA rod Zinc Plated. Qty:-2 Set)

**NOTES:-**

1. ALL DIMENSIONS ARE IN mm UNLESS OTHERWISE STATED.
2. THE BOARD AND THE FUSE CARRIER SHALL BE MADE OUT OF FIBRE GLASS REINFORCED SHEET MOULDING COMPOUND.
3. ALL METALLIC SCREWS AND SCREW HEAD BOLTS & NUTS ARE M.S ZINC PLATED UNLESS OTHERWISE STATED.
4. MALE CONTACT SHALL BE MADE OUT OF HARD COPPER 1.8mm THICK. 12.5mm WIDE STRIP.
5. CONTACT BLOCK SHALL BE MADE OUT OF BRASS 11x19x18 mm RECTANGLE BLOCK NICKLE PLATED WITH FIXING SCREWS.
6. SPRING CLIP SHALL BE MADE OUT OF PHOSPHOR BRONZE 1mm THICK, 18mm WIDE STRIP NICKLE PLATED.
7. NEUTRAL BAR SHALL BE MADE OUT OF ALUMINIUM FLAT 6mm THICK, 25mm WIDE, 100mm LONG WITH 4 NOS. M-8 TAPPED HOLES.
8. ALL SCREW HOLES IN THE MOULDING TO BE INSULATED WITH EPOXY COMPOUND.
9. ASBESTOS CLOTH SHALL BE PROVIDED BENEATH OF THE SPRING CLIP AND MALE CONTACT, FUSE WIRE CARRYING GROOVE AS SHOWN IN DRG.
10. BESCOM PURCHASE ORDER NO. AND DATE SHALL BE ENGRAVED ON THE TOP OF EACH FUSE CARRIER AS SHOWN IN THE DRG. AND ON THE BOARD AT A SUITABLE PLACE.
11. ONE FUSE PULLED TO BE PROVIDED WITH EVERY 100 BOARDS.

	Signatures	All dimensions are in mm unless otherwise stated.	
Chd		60A CAPACITY FIBRE GLASS REINFORCED PLASTIC BOARD WITH POLE MOUNTING CLAMPS	Approved:
Sub			
	SCALE: N.T.S		DRG.NO.BESCOM/GM/QS&S/24 REV-002 DATED:24-11-2018