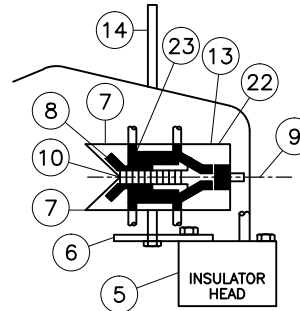
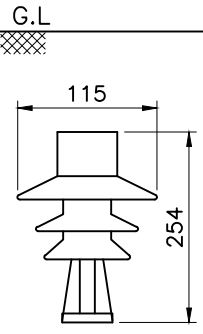
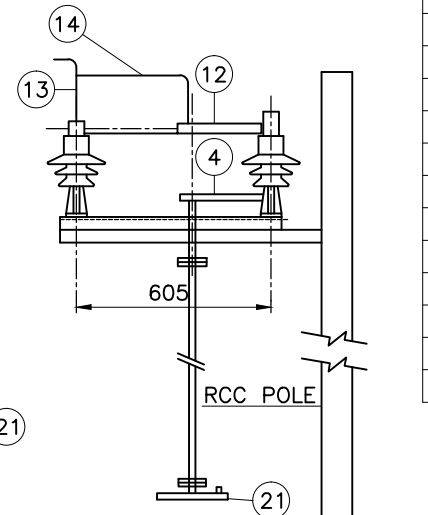
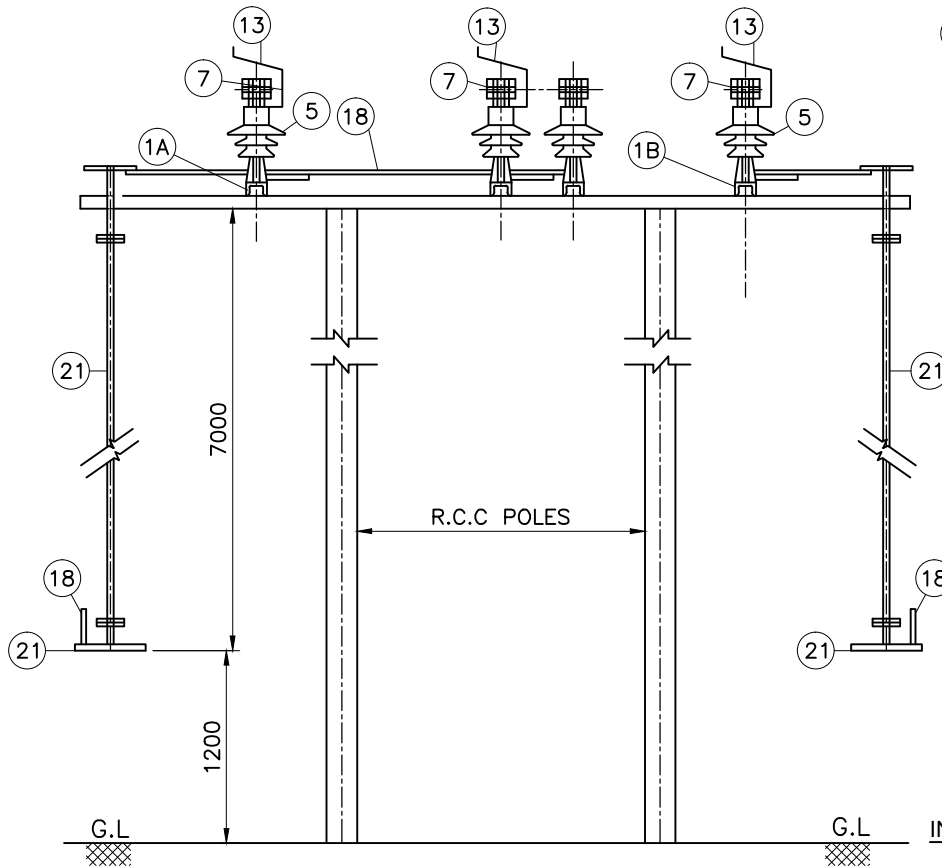


11KV 400A ROASTER GOS (SINGLE BREAK)



TOP DETAILS IN SECTIONAL ELEVATION



INSULATOR DETAILS

SL. NO.	DESCRIPTION	SIZE	SECTION IN mm	QTY.
1A.	M.S CHANNEL	500	75x40x6	2 NO.
1B.	M.S CHANNEL	680	75x40x6	1 NO.
2.	GUN METAL BUSH (TOP) FOR SPINDLE (STANDARD PARTS NOT SHOWN IN THE DRG.)	10mm HT.	1"φ	3 NO.
3.	GUN METAL BUSH (BOTTOM) FOR SPINDLE (STANDARD PARTS NOT SHOWN IN THE DRG.)	10mm Ht.	1"φ	3 NO.
4.	SPINDLE PLATE	290	75x6mm	3 NO.
5.	11KV POST INSULATOR	-	-	7 NO.
6.	TOP PLATE	110	50x6mm	4 NO.
7.	CONTACT BOX			4 SET
8.	COPPER TONGUE	95mm	32x6mm	8 NO.
9.	COPPER LEAD FLAT	210	32x6mm	4 NO.
10.	COPPER KNIFE	210mm	32x6mm	3 NO.
11.	M.S.MOVABLE ANGLE	500mm	45x45x5	2 NO.
12.	M.S.MOVABLE ANGLE	540mm	45x45x5	1 NO.
13.	ARCING HORN 8mmφ	360mm		4 NO.
14.	ARCING HORN 8mmφ	570mm		4 NO.
15.	BI-METALLIC CLAMP		AL. ALLOY	7 NO.
16.	COPPER CONNECTING ROD	570mm	8mmφ	1 NO.
17.	COPPER CONNECTING ROD	380mm	8mm φ	2 NO.
18.	G.I PIPE	1.2 M	25mm	1 NO.
19.	G.I PIPE	0.54M	25mm	1 NO.
20.	OPERATING HANDLE PIPE	0.50M	25mm	2 NO.
21.	VERTICAL PIPE	5.56M	25mm	2 NO.
22.	COPPER STRIPE	110mm	30swg x 25mm	32 NO.
23.	PHOSPHOR BRONZE SPRING	14G		16 NO.

BOLT NUT DETAILS:-

- 2 1/2"x1/2" - 5 NOS. GALVANISED.
- 2 1/2"x3/8" - 6 NOS. GALVANISED.
- 2 1/2"x1/2" - 6 NOS. MS
- 1 1/2"x1/2" - 46 NOS. GALVANISED.
- 1 1/4"x3/8" - 17 NOS GALVANISED.
- 1"x3/8" - 34 NOS. GALVANISED.
- 3/8" FLAT WASHER - 30 NOS. + PACKING GI WASHERS.
- 3/8" SPRING WASHER - 50 NOS. GALVANISED.

NOTES:-

- ALL MS PARTS TO BE HOT DIP GALVANISED.
- ALL COPPER PARTS TO BE TIN PLATED.
- GI PIPE OF 25mm φ CLASS B TO BE USED.

Signatures		All dimensions are in mm unless otherwise stated. GENERAL ARRANGEMENT OF 11 KV, 400A SINGLE BREAK ROASTER ISOLATOR	 Approved: _____ General Manager, (Elec.) QS&S
Chd	<i>[Signature]</i> A/BM (QS&S)		
Sub	<i>[Signature]</i> DGM (QS&S)		
SCALE: N.T.S		DRG.NO.BESCOM/GM/QS&S/36 REV-002	DATED:24-11-2018