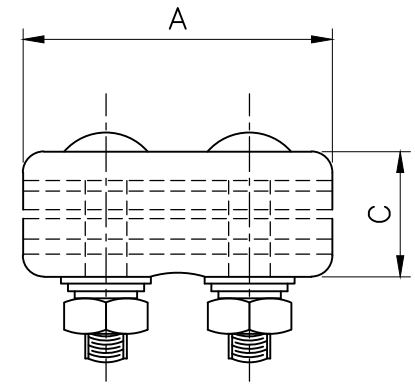
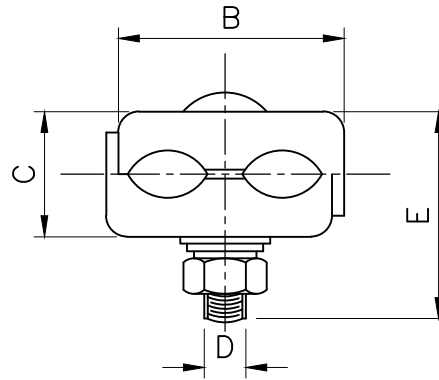


THREE BOLT TYPE



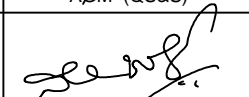
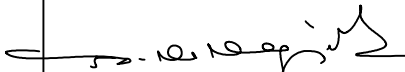


TWO BOLT TYPE

SL. NO.	SIZE OF CONDUCTOR	DIMENSIONS							NO. OF BOLTS
				A	B	C	D	E	
1.	240 SQ.mm LT LEAD/RABBIT	20.05	10.05	140	78	42	16	78	3
2.	185 SQ.mm LT LEAD/RABBIT	14.35	10.05	127	65	36	12	57	3
3.	95 SQ.mm LT LEAD/RABBIT	12.70	10.05	125	58	35	12	55	2
4.	50 SQ.mm LT LEAD/RABBIT	9.15	10.05	99	48	22.2	12	44	2

NOTES:-

1. CLAMP BODY HIGH STRENGTH, CORRISION-RESISTANT, ALUMINIUM WITH EC GRADE
2. DIN.934 DACROMET

	Signatures	All dimensions are in mm unless otherwise stated.	 BESCOM
Chd	 AGM (QS&S)	P.G CLAMPS SUITABLE FOR A.C.S.R CONDUCTORS	Approved:
Sub	 DGM (QS&S)		 General Manager, (Elec.) QS&S
SCALE: N.T.S			DRG.NO.BESCOM/GM/QS&S/43 REV-002 DATED:24-11-2018