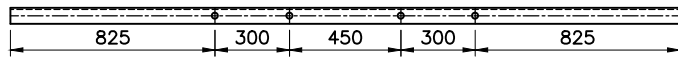
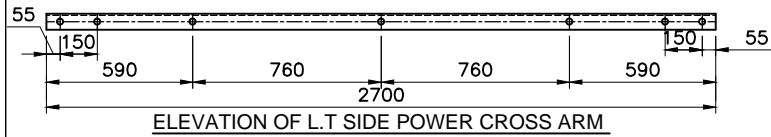
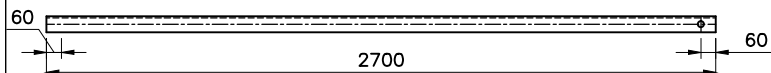


Code Mark:t1 Quantity:- 1 No. (Mat.:- L65x65x6)



Code Mark:t1 Quantity:- 1 No. (Mat.:- L65x65x6)

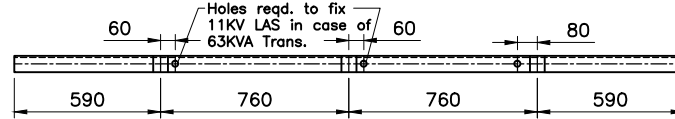
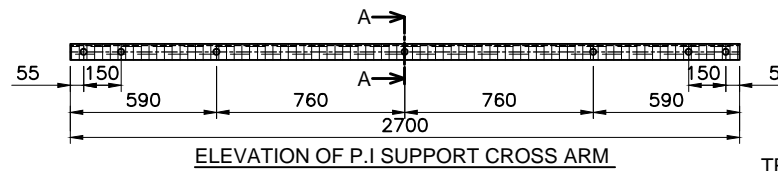


Code Mark:t3 Quantity:- 2 No. (Mat.:- L45x45x5)

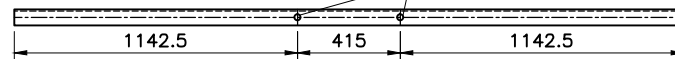
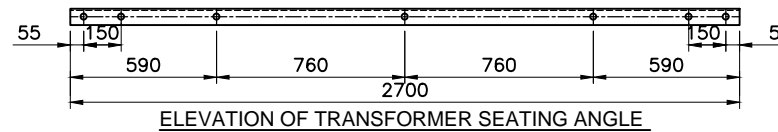
BILL OF MATERIALS-1A

CODE MARK	PARTICULARS	QUANTITY	MATERIAL	LENGTH/PIECE	TOTAL WT./SET In Kgs.	16mm HEX BOLT & NUT	QTY.	Length of 20# A Class GI distant pipe	QTY.	Type of clamp made out of 50x8 MS flat	QTY.	WT./SET In Kgs.
11	H.T + L.T SIDE POWER X-ARM	1SET/2NOS.	L65x65x6	2.7+2.7Mtr.	31.32	175mm	7NO.	120mm	3NO.	-	-	-
12	P.I SUPPORT X-ARM	1NO.	L50x50x6	2.7+0.06x3Mtr.	12.96	65mm	4NO.	-	-	C1-450mm long	2NO.	2.16
13	BELTING X-ARM AND BELTING SUPPURT X-ARM	1SET/4NOS.	L45x45x5 L50x50x6	2.7+2.7Mtr. 0.5+0.5Mtr.	21.60 4.60	50mm 65mm	4NO. 4NO.	-	-	C2-465mm long	2NO.	2.23
14	TRANSFORMER SEATING ANGLE AND TR. SEATING ANGLE SUPPORT X-ARM	1SET/2NOS.	L65x65x6	2.7+2.7Mtr. 0.275+0.275Mtr.	31.32 3.19	200mm 65mm 12mm# 50mm	7NO. 4NO. 4NO.	160mm	3NO.	C2-465mm long	2NO.	2.23
	DISTRIBUTION BOX FIXING CLAMPS	-	-	-	-	-	-	-	-	C3-538mm long	2NO.	2.56

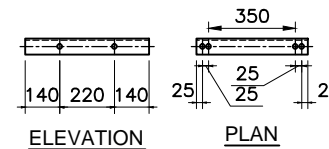
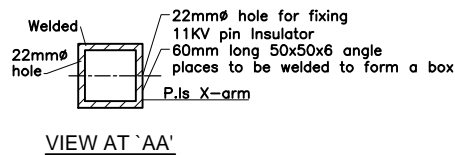
- NOTES:-**
- WITH REFERENCE TO BOARD CIRCULAR NO.KEB/BB/1474/B4-85 OT.19.06.85 TO ISSUE T.C STRUCTURAL MATERIAL FOR 25/63KVA TRANSFORMERS AS A KIT THE DRG HAS BEEN PREPARED USING 9.0 MTR. RCC POLE AS PER DRG. NOMSEB-GPL-MISC-7 & 25/63KVA T.C ARRANGEMENT DRG.NO.SIC/DL/003 DT.31-07-80.
 - THE WEIGHTS GIVEN ARE OF RAW MATERIAL AS PER ISI STRUCTURAL STEEL HAND BOOK.
 - ALL HOLES ARE OF 18mm# FOR 16mm# BOLTS.
 - ALL SLOTTED HOLES ARE OF 18x35mm LONG.
 - BOLTS REQUIRED TO FIX L.As ARE NOT INCLUDED AS THE SAME IS TO BE SUPPLIED ALONG WITH L.As.



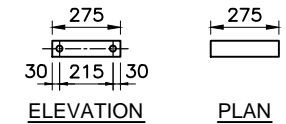
Code Mark:t2 Quantity:- 1 No. (Mat.:- L50x50x6)



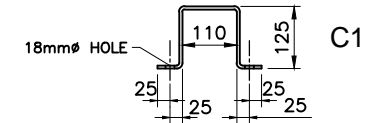
Code Mark:t4 Quantity:- 2 Nos. (Mat.:- L65x65x6)



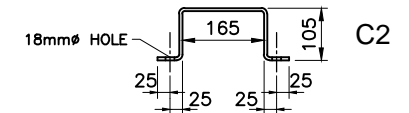
Code Mark:t3 Quantity:- 2 Nos. (Mat.:-L50x50x6)



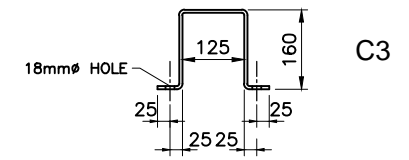
Quantity:- 2 Nos. (Mat.:- L65x65x6)
Code Mark:t4



CLAMP FOR P.I SUPPORT X- ARM
Quantity:- 2Nos. (Mat.:-50x6 Flat)



CLAMP FOR TRANS. SEATING ANGLE SUPPORT X- ARM & TR. BELTING SUPPORT X-ARM
Quantity:- 4Nos. (Mat.:-50x6 Flat)



CLAMP FOR SUPPORTING TR.D.B.BOX
Quantity:- 2 Nos. (Mat.:-50x6 Flat)

	Signatures	All dimensions are in mm unless otherwise stated.	
Chd		THE DETAILS OF 25/63 KVA DOUBLE POLE TRANSFORMER CENTRE KIT USING RCC POLES	Approved:
Sub			
	SCALE: N.T.S		DRG.NO.BESCOM/GM/QS&S/44 REV-002 DATED:24-11-2018