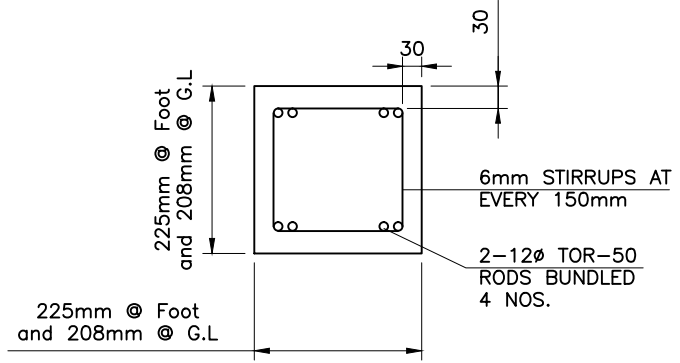


TOP PLAN



BOTTOM PLAN

NOTE:-

1. CEMENT CONCRETE GRADE M25.
2. TOR 50 GRADE STEEL TO BE USED.
3. MINIMUM CONCRETE COVER 30mm.
4. BUNDLED BARS SHALL BE TIED TOGETHER TO ENSURE THE BARS REMAINING TOGETHER.
5. APPROXIMATE QUANTITY OF MATERIALS REQUIRED PER POLE:



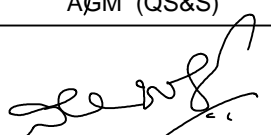
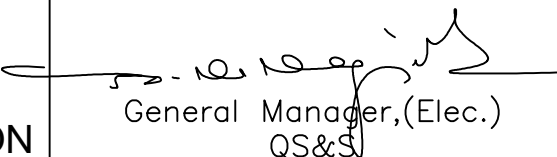
M 25 CONCRETE = 0.285 Cu.m.

DETAILS OF REINFORCEMENT

TOR 50 STEEL 45.4 Kg. AS FOLLOWS:

- 4 NOS. 12 mm RODS EACH 9 M
- 2 NOS. 12 mm RODS EACH 4 M
- 2 NOS. 12 mm RODS EACH 3.5 M

CURTAILMENT LENGTH OF TWO DIAGONALLY OPPOSITE RODS SHALL BE 3.5 Mtrs. AND 4.0 Mtrs FOR OTHER DIAGONAL RODS.

	Signatures	All dimensions are in mm unless otherwise stated.	 BESCOM
Chd	 AGM (QS&S)	REINFORCEMENT DETAILS OF 9.0 M 150 Kg. R.C.C POLE WITH SQUARE SECTION FACTOR OF SAFETY=2.0	
Sub	 DGM (QS&S)		 General Manager, (Elec.) QS&S
	SCALE: N.T.S		DRG.NO.BESCOM/GM/QS&S/51 REV-002 DATED:24-11-2018