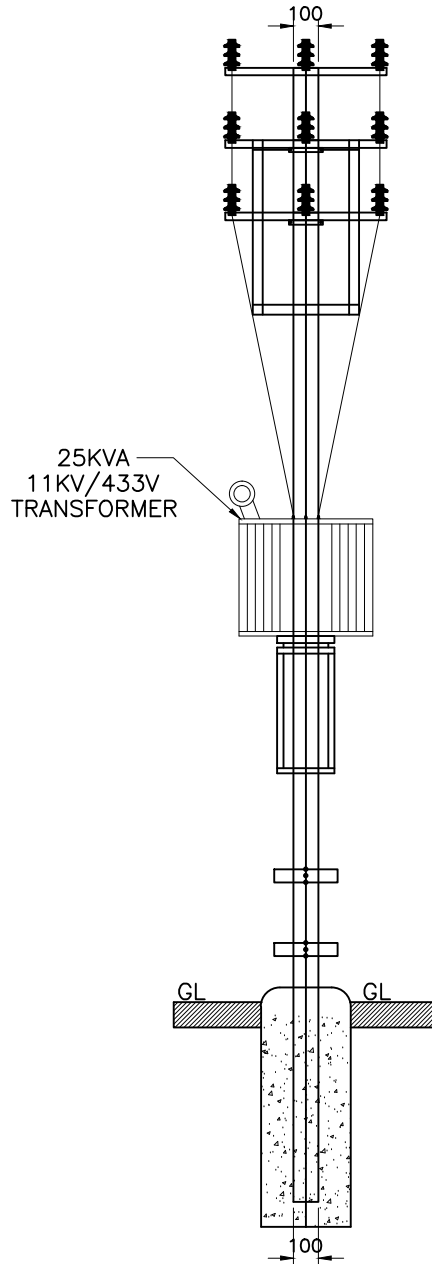

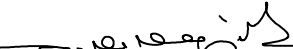
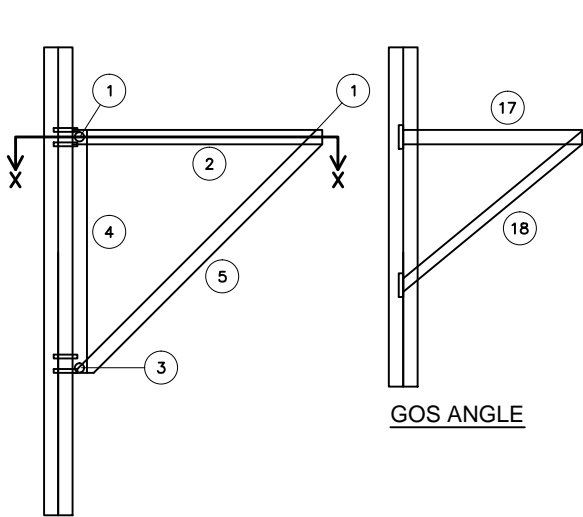


**SIDE ELEVATION**

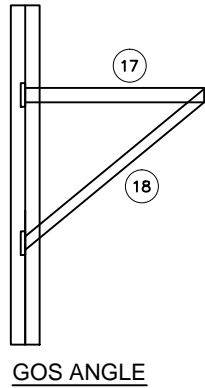


**FRONT ELEVATION**

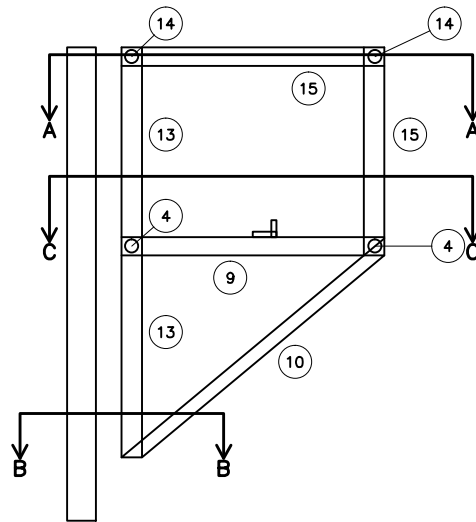
Signatures		All dimensions are in mm unless otherwise stated.	 <b>BESCOM</b>
Chd	<i>[Signature]</i> AGM (QS&S)	<b>GENERAL ARRANGEMENT DRAWING FOR SINGLE POLE STRUCTURE SET ON 9MTR. 300 KG WL PSCC POLE FOR 25 KVA 4/5 STAR RATED, BOM-7B (SHEET 1 OF 3)</b>	
Sub	<i>[Signature]</i> DGM (QS&S)		 General Manager, (Elec.) QS&S
SCALE: N.T.S			DRG.NO.BESCOM/GM/QS&S/64 REV-002 DATED:24-11-2018



SUPPORT STRUCTURE FOR TRANSFORMER

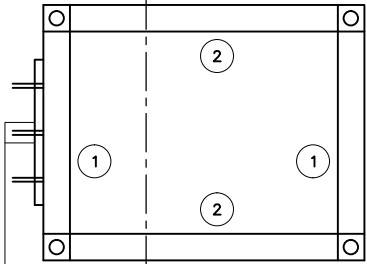


GOS ANGLE

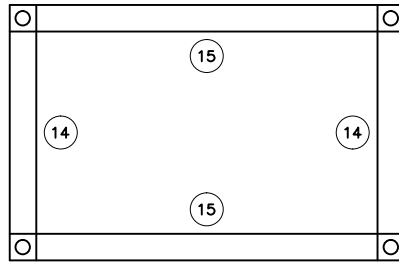


SUPPORT STRUCTURE FOR GOS, HG FUSE & LA

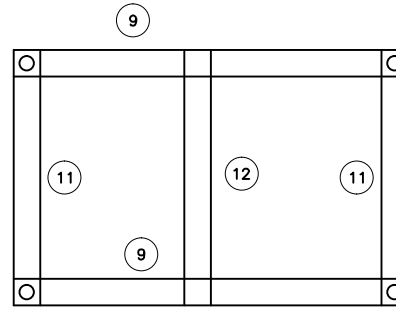
CL OF TRANSFORMER MAX  
600mm FROM POLE



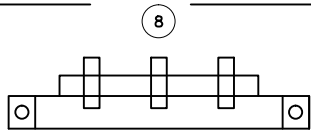
PSCC POLE      SECTION PLAN "XX"



SECTION PLAN "AA"

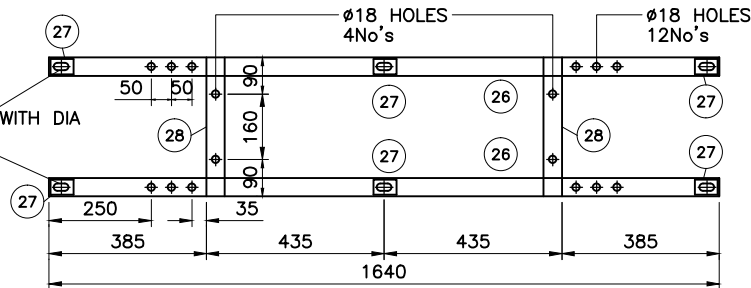


SECTION PLAN "CC"



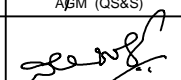


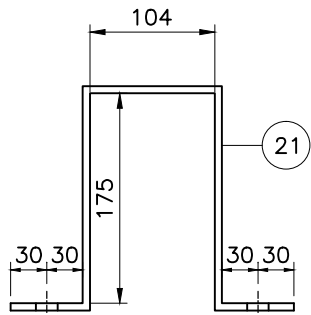
SECTION PLAN "BB"

45x45x5 CLEAT WITH DIA  
18x36 SLOTS

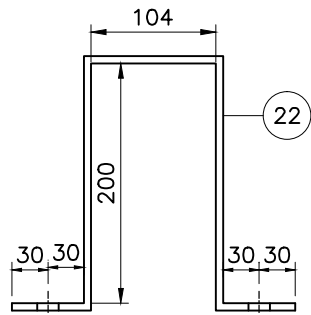


H-FRAME

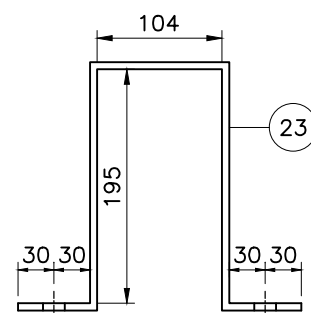
	Signatures	All dimensions are in mm unless otherwise stated.	 Approved:
Chd	 AGM (QS&S)	GENERAL ARRANGEMENT DRAWING FOR SINGLE POLE STRUCTURE SET ON 9MTR. 300 KG WL	
Sub	 DGM (QS&S)	PSCC POLE FOR 25 KVA 4/5 STAR RATED, BOM-7B (SHEET 2 OF 3)	DRG.NO.BESCOM/GM/QS&S/64 REV-002      DATED:24-11-2018
SCALE: N.T.S			



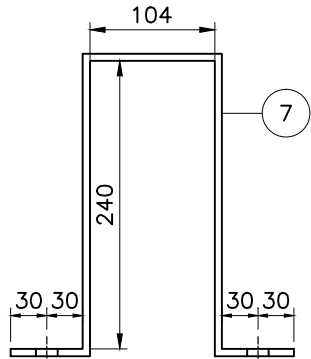
CLAMP FOR GOS MOUNTING



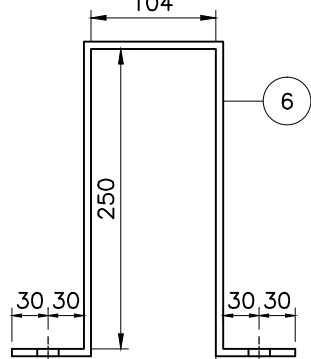
CLAMP FOR GOS BRACE



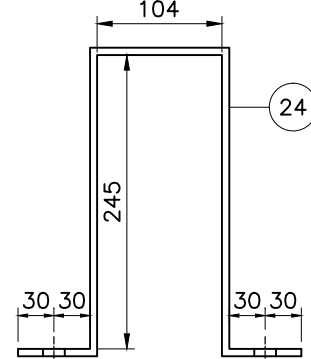
CLAMP FOR HG FUSE UNIT



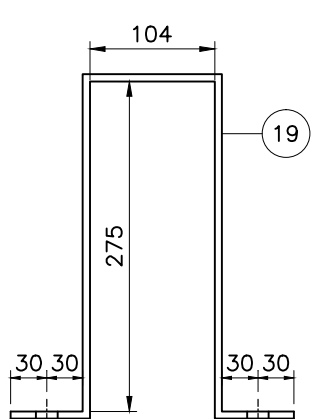
CLAMP FOR TFR BELTING ANGLE



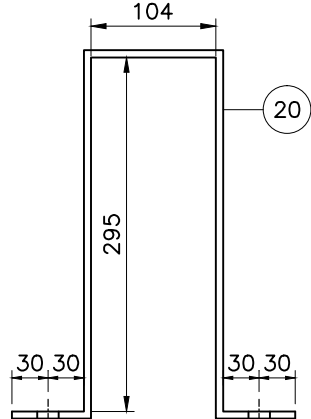
CLAMP FOR TFR SEATING ANGLE



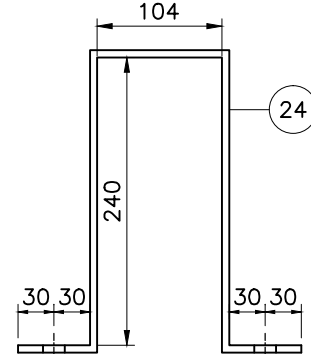
CLAMP FOR LT KIT (BOTTOM)



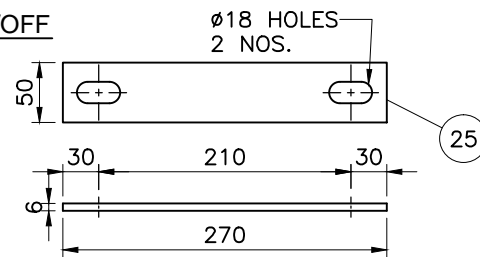
CLAMP FOR GOS ON/OFF ANGLE



CLAMP FOR GOS ON/OFF ANGLE BRACE



CLAMP FOR LT KIT (TOP)



FISH PLATE (50x6)

**BILL OF MATERIALS - 7 B**

**SPMT Structure materials suitable for mounting 25KVA Star Rated Transformers by using PSCC 9Mtrs Long Pole, 300kg WL With H Frame**

Sl. No.	Part No.	Qty in Nos	MS Angle Flat in mm	Length/Piece in mm x Nos	Wt/Mtr in Kgs	Approx wt in Kg
<b>Transformer Seating Kit</b>						
1	Transformer Seating Channel	2	65x65x6	485	5.8	5.63
2	Transformer Seating Channel	2	65x65x6	850	5.8	9.86
3	Transformer Belting Angle with 65mm Cleat Welded	1	65x65x6	485	6.5	3.15
4	Transformer Seating Supporting Vertical Side Angle	2	45x45x5	1000	3.4	6.80
5	Brace for Transformer Seating Angle	2	45x45x5	1230	3.4	8.36
6	Back Clamp for Transformer Seating Angle	1	50x8	724	3.1	2.24
7	Back Clamp for Transformer Belting Angle	1	50x8	704	3.1	2.18
<b>LA, HG Fuse Unit and Supporting Materials</b>						
8	Horizontal Supporting Side Angle for H Frame set	1	50x50x6	850	4.5	3.83
9	Horizontal Supporting Side angle for HG Fuse Unit	2	50x50x6	1150	4.5	10.35
10	Brace for GOS & HG Fuse Unit	2	45x45x5	1321	3.4	8.98
11	Horizontal Supporting Side Angle for HG Fuse Unit	2	50x50x6	850	4.5	7.65
12	Horizontal Angle for HG Fuse Fixing	1	50x50x6	835	4.5	3.76
13	Vertical Supporting angle for fixing GOS & HG Fuse Unit	2	45x45x5	1550	3.4	10.54
14	Horizontal Supporting Side angle for fixing GOS	2	50x50x6	850	4.5	7.65
15	Vertical Supporting angle for fixing GOS	2	45x45x5	850	3.4	5.78
16	Horizontal Supporting angle for fixing GOS	2	50x50x6	1150	4.5	10.35
17	GOS Operating Pipe Supporting Angle	1	65x65x6	1150	5.8	6.67
18	GOS Operating Pipe Brace Angle	1	45x45x5	1000	3.4	3.40
19	Back Clamp For GOS Operating Pipe Supporting Angle (ON/OFF)	1	50x8	774	3.1	2.40
20	Back Clamp For GOS Operating Pipe Brace Angle (ON/OFF)	1	50x8	814	3.1	2.52
21	Back Clamp For GOS Mounting	1	50x8	574	3.1	1.78
22	Back Clamp For GOS Brace	1	50x8	624	3.1	1.93
23	Back Clamp For HG Fuse Unit	1	50x8	614	3.1	1.90
24	Back Clamp For LT Kit	1	50x8	714	3.1	2.21
25	Fish Plate	1	50x6	270	2.4	0.65
<b>11kV H Frame Ladder Set details</b>						
26	Angle Type A1&A2	2	45x45x5	1640	3.4	11.15
27	Welded Angle	6	45x45x5	60	3.4	1.22
28	Angle Type A3	2	45x45x5	345	3.4	2.35
<b>TOTAL a) Structure Steel</b>						<b>147.49</b>
<b>MS Bolts &amp; Nuts Full Thread Including H Frame</b>						
<b>MS Bolt &amp; Nuts Full Thread For Transformer, Structure Kit &amp; H Frame</b>		47	16x40mm to 16x125mm	-	-	10.00
<b>TOTAL b) Bolt and Nut Full Thread</b>						<b>10.00</b>

Signatures		All dimensions are in mm unless otherwise stated.	 <b>BESCOM</b>
Chd	<i>[Signature]</i> A/BM (QS&S)		
Sub	<i>[Signature]</i> DGM (QS&S)	GENERAL ARRANGEMENT DRAWING FOR SINGLE POLE STRUCTURE SET ON 9MTR. 300 KG WL PSCC POLE FOR 25 KVA 4/5 STAR RATED, BOM-7B (SHEET 3 OF 3)	Approved: <i>[Signature]</i> General Manager, (Elec.) QS&S
SCALE: N.T.S			DRG.NO.BESCOM/GM/QS&S/64 REV-002 DATED:24-11-2018