
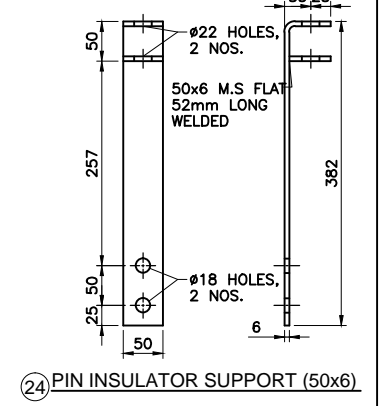
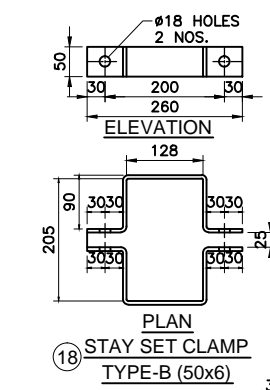
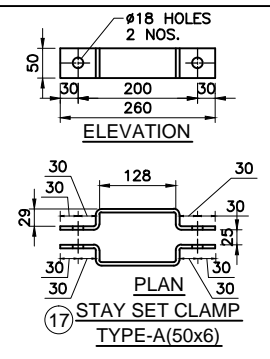
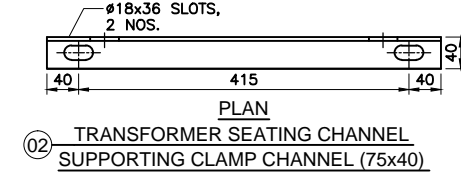
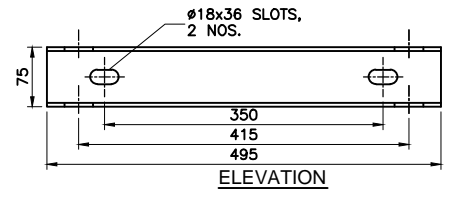
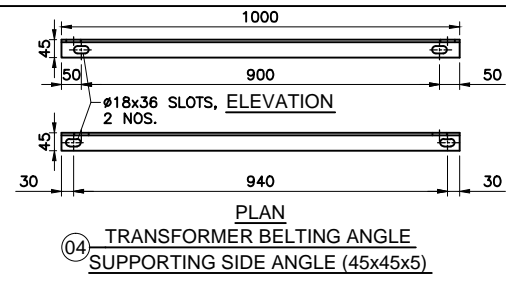
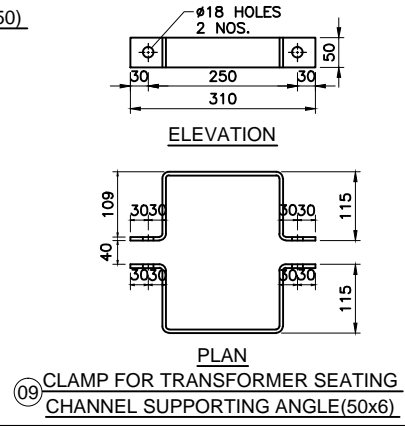
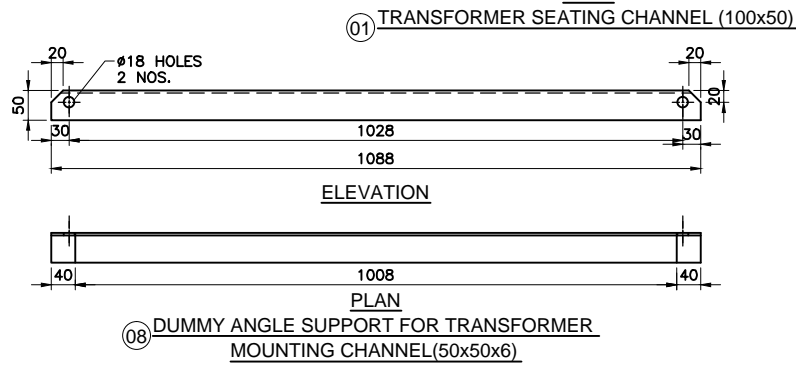
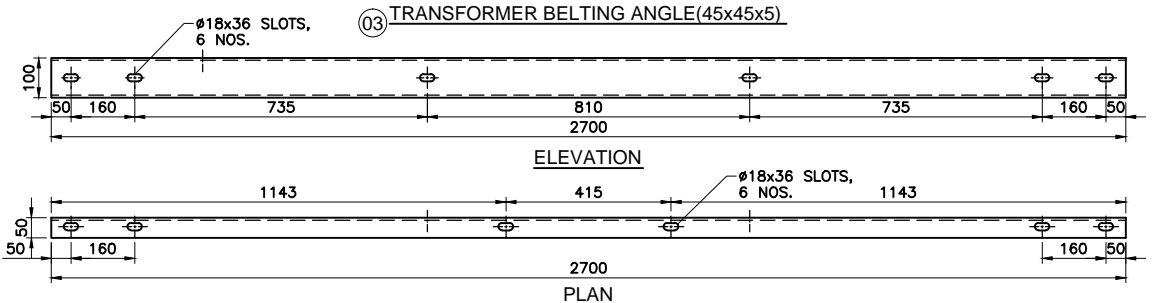
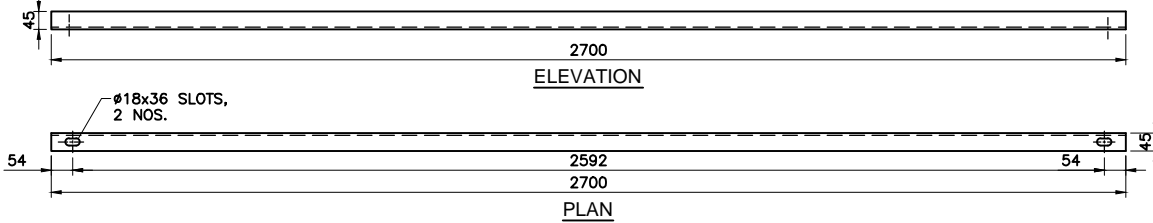
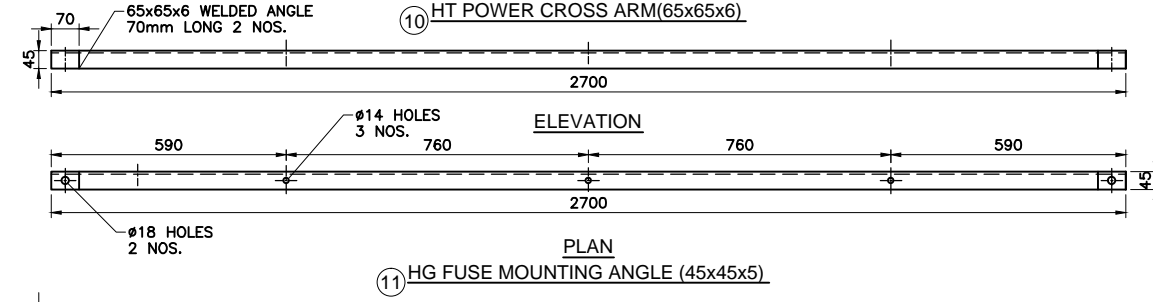
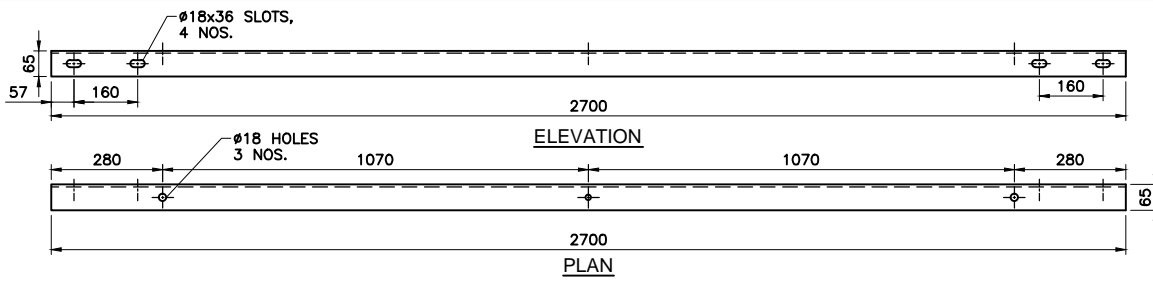


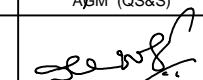
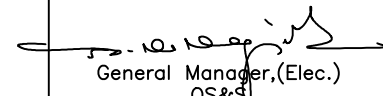


SR. NO.	DESCRIPTION	QTY. (In Nos.)
1	9 mtr. 145kg RCC Pole	2Nos.
2	11kv Disc Insulator	3Nos.
3	Pole Base Pad	2Nos.
4	Stay Set Arrangement	4Nos.
5	11kv Danger Board	1No.
6	Barbed Wire	As req
7	Stay Clamp Type-A	2Nos.
8	Stay Clamp Type-B	2Nos.
9	11KV GOS	1Set
10	9KA Lightning Arrester	3Nos.
11	Fish Plate	3Nos.
12	11KV HG Fuse	3Nos.
13	250KVA Transformer	1No.
14	250KVA LTDB With Clamps	1No.
15	HT Power Cross Arm	2Nos.
16	H-frame	1No.
17	Back Clamp For HG Fuse Mounting Angle Supporting Angle	2Nos.
18	HG Fuse Mounting Angle	1No.
19	Transformer Belting Angle	2Nos.
20	Transformer Belting Supporting Side Angle	2Nos.
21	Transformer Mounting Channel	2Nos.
22	Transformer Mounting Supporting Clamp	2Nos.
23	Back Clamp for Transformer Belting Angle Supporting Side Angle	2Nos.
24	Top & Bottom Plastic Spacer Supporting Fish Plate	2Nos.
25	Back Plastic Spacer Supporting Supporting Fish Plate	1No.
26	Bottom Plastic Spacer Supporting Fish Plate	1No.
27	Back Clamp for Bottom Plastic Spacer Supporting Fish Plate	1No.
28	Dummy Angle Support For Transformer Mounting Channel	4Nos.
29	Clamp For Transformer Mounting Channel Supporting Angle	4Nos.
30	LA Mounting Angle	1No.
31	HG Fuse Mounting Angle Supporting Angle	2Nos.
32	HG Fuse Angle Bracing Angle	2Nos.
33	Back Clamp for HG Fuse Bracing Angle Supporting Angle	2Nos.
34	Pin Insulator Support	3Nos.
35	H-Frame Angle/HG Fuse Brace Supporting Angle	4Nos.
36	GOS Operating Pipe Supporting Angle	1No.
37	Back Clamp for GOS Operating Pipe Supporting Angle	1No.
38	Meter Box With Clamps	1No.

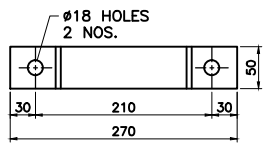
	Signatures	All dimensions are in mm unless otherwise stated.	 <b>BESCOM</b>
Chd	<i>[Signature]</i> AGM (QS&S)		
Sub	<i>[Signature]</i> DGM (QS&S)	<b>FABRICATION DETAILS FOR 250KVA 4/5 STAR DPTC STR ON 9MTR. 145KG RCC POLE BOM-2B SHEET 1 OF 4</b>	Approved: <i>[Signature]</i> General Manager, (Elec.) QS&S
	SCALE: N.T.S		DRG.NO.BESCOM/GM/QS&S/71 REV-002 DATED:24-11-2018



Signatures		All dimensions are in mm unless otherwise stated.	 <b>BESCOM</b> Approved:
Chd	 A.M. (QS&S)		
Sub	 D.G.M. (QS&S)	FABRICATION DETAILS FOR 250KVA 4/5 STAR DPTC STR ON 9MTR. 145KG RCC POLE BOM-2B SHEET 2 OF 4	 General Manager, (Elec.) QS&S
SCALE: N.T.S			DRG.NO.BESCOM/GM/QS&S/71 REV-002 DATED:24-11-2018

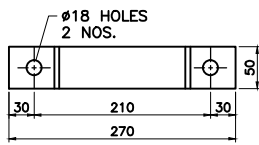
**BILL OF MATERIALS - 2 B**

**DPTC Structure materials suitable for mounting 250KVA Star Rated Transformers by using RCC 9M trs Long, 145kG WL Poles**



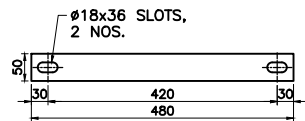
**ELEVATION**

**PLAN**  
**(15) BACK CLAMP FOR BOTTOM PLASTIC SPACER FISH PLATE(50x6)**

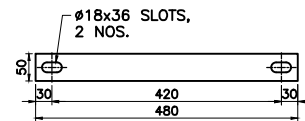


**ELEVATION**

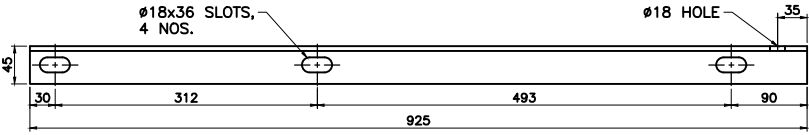
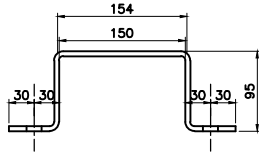
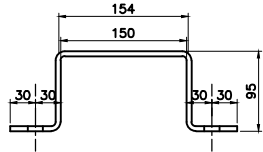
**PLAN**  
**(14) BACK CLAMP FOR TOP PLASTIC SPACER FISH PLATE (50x6)**



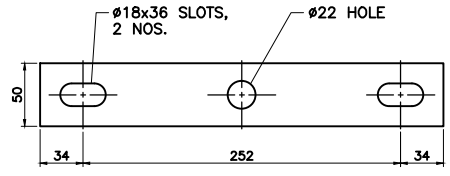
**(16) BACK CLAMP FOR TOP PLASTIC SPACER FISH PLATE(50x6)**



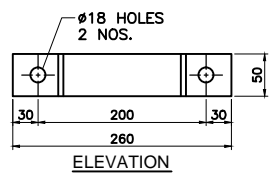
**(16) BACK CLAMP FOR BOTTOM PLASTIC SPACER FISH PLATE(50x6)**



**(20) HORIZONTAL ANGLE FOR HG FUSE FIXING(45x45x5)**

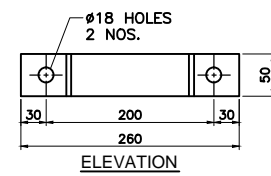


**(07) FISH PLATE (50x6)**



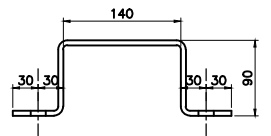
**ELEVATION**

**(23) BACK CLAMP FOR HG FUSE BRACE ANGLE SUPPORTING ANGLE (50x6)**

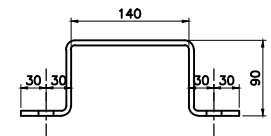


**ELEVATION**

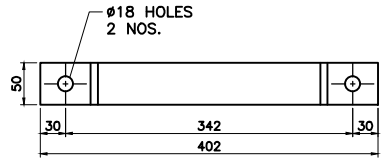
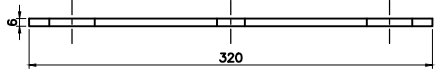
**(21) BACK CLAMP FOR HG FUSE MOUNTING ANGLE SUPPORTING ANGLE(50x6)**



**PLAN**

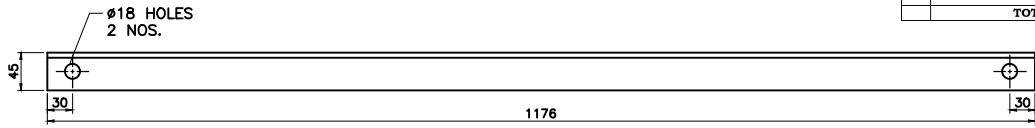


**PLAN**

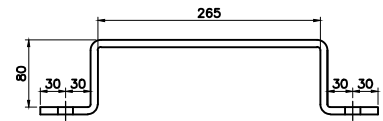


**ELEVATION**

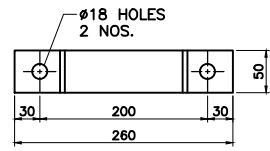
**PLAN**  
**(06) BACK CLAMP FOR TRANSFORMER BELTING ANGLE (50x6)**



**(22) BRACE ANGLE FOR HG FUSE MOUNTING ANGLE(45x45x5)**

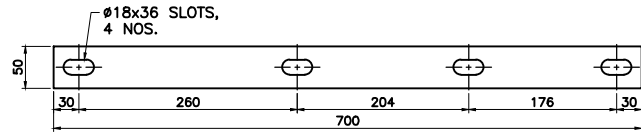


**PLAN**



**ELEVATION**

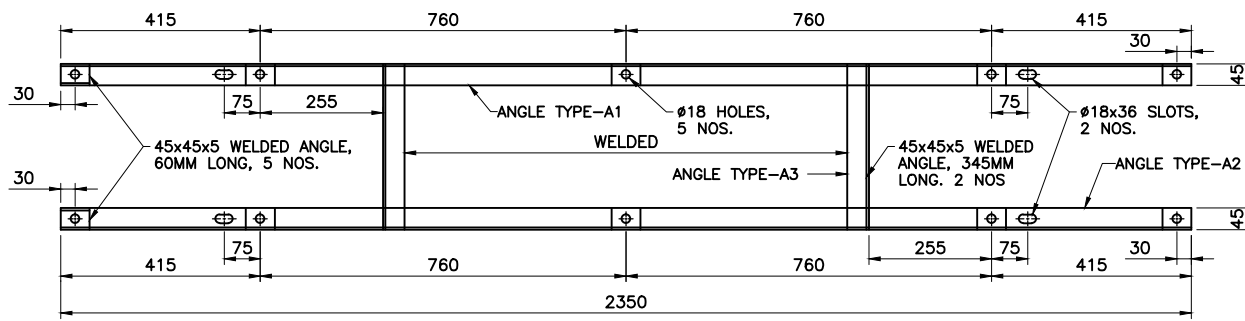
**(12) BACK CLAMP FOR HG FUSE UNIT(50x6)**



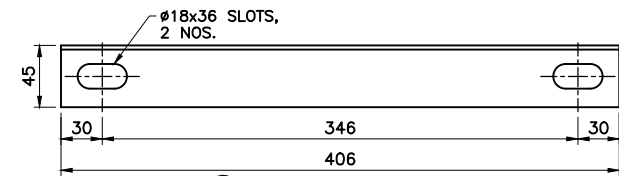
**(13) PLASTIC SPACER SUPPORTING FISH PLATE(50x6)**

Sl. No.	Part No.	Qty in Nos	M S Angle Flat in mm	Length/ Piece in mm x Nos	Wt/M tr in Kgs	Approx wt in Kg
<b>Transformer Seating Kit</b>						
1	Transformer Seating Channel	2	100x50	2700	9.56	51.62
2	Transformer Seating Channel Supporting Clamping Channel	4	75x40	495	7.14	14.14
3	Transformer Belting Angle	2	45x45x5	2700	3.4	18.36
4	Transformer Belting Angle Supporting Side Angle	2	45x45x5	1000	3.4	6.80
5	Transformer Clamping Angle	2	50x50x6	495	4.5	4.46
6	Back Clamp for Transformer Belting Angle	2	50x6	557	2.4	2.67
7	Fish Plate	3	50x6	320	2.4	2.30
8	Dummy Angle Support for Transformer Mounting Channel	4	50x50x6	1088	4.5	19.58
9	Clamp for Transformer Seating Channel Supporting Angle	4	50x6	560	2.4	5.38
<b>LA, HG Fuse Unit and Seating Materials</b>						
10	HT Power Cross Arm	2	65x65x6	2700	5.8	31.32
11	HG Fuse Mounting Angle	1	45x45x5	2700	3.4	9.18
	Welded Angle	2	45x45x5	70	3.4	0.48
12	Back Clamp for HG Fuse Unit	2	50x6	460	2.4	2.21
13	Plastic Spacer supporting Fish Plate	2	50x6	700	2.4	3.36
14	Back Clamp for Top Plastic Spacer Fish Plate	2	50x6	480	2.4	2.30
15	Back Clamp for Bottom Plastic Spacer Fish Plate	2	50x6	480	2.4	2.30
16	Back Clamp for Top & Bottom Plastic Spacer Fish Plate	2	50x6	480	2.4	2.30
17	Stay Set Clamp Type-A	2	50x6	460	2.4	2.21
18	Stay Set Clamp Type-B	2	50x6	460	2.4	2.21
19	LA Mounting Angle	1	50x50x6	2360	4.5	10.62
	Welded Angle	2	50x6	70	4.5	0.63
20	Horizontal Angle for HG Fuse Fixing	2	45x45x5	925	3.4	6.29
21	Back Clamp for HG Fuse Mounting Angle Supporting Angle	2	50x6	460	2.4	2.21
22	Brace Angle for HG Fuse Mounting Angle	2	45x45x5	1176	3.4	8.00
23	Back Clamp for HG Fuse Brace Angle Supporting Angle	2	50x6	460	2.4	2.21
24	Pin Insulator Support	3	50x6	382	2.4	2.75
	Welded Angle	3	50x6	52	2.4	0.37
<b>11kV H Frame Set details</b>						
	Angle Type A1& A2	2	45x45x5	2350	3.4	15.98
25	Welded Angle	10	45x45x5	60	3.4	2.04
	Angle Type A3	2	45x45x5	345	3.4	2.35
26	Horizontal Angle for H-Frame	2	65x65x6	1200	5.8	13.92
27	Brace Angle for H-Frame Fixing	2	45x45x5	1330	3.4	9.04
28	GOS Operating Pipe Supporting Angle	1	45x45x5	1200	3.4	4.08
29	Back Clamp For H-Frame Brace Angle Supporting Angle	4	50x6	460	2.4	4.42
30	Back Clamp For Horizontal Angle For H-Frame Fixing	2	50x6	460	2.4	2.21
31	Back Clamp For GOS Operating Pipe Supporting Angle	1	50x6	560	2.4	1.34
32	H-Frame Brace Angle Supporting Angle	2	45x45x5	406	3.4	2.76
<b>TOTAL a) Structure Steel</b>						<b>274.40</b>
<b>M S Bolts &amp; Nuts Full Thread Including H Frame</b>						
		16	M16x40mm		0.166	2.66
		8	M16x140mm		0.313	2.50
		2	M16x100mm		0.249	0.50
		26	M16x55mm		0.195	5.07
		4	M16x230mm		0.456	1.82
		6	M16x80mm		0.217	1.30
		2	M16x40mm		0.166	0.33
		4	M16x90mm		0.233	0.93
		10	M16x55mm		0.195	1.95
<b>TOTAL b) Bolt and Nut Full Thread</b>						<b>17.07</b>

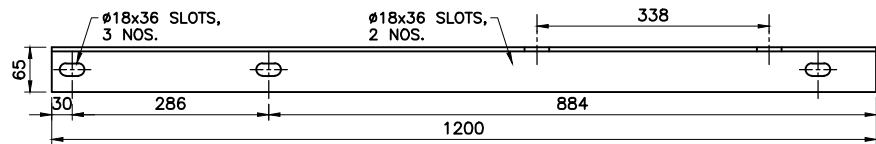
	Signatures	All dimensions are in mm unless otherwise stated.	 <b>BESCOM</b> Approved:
Chd	<i>[Signature]</i> AEM (QS&S)	FABRICATION DETAILS FOR 250KVA 4/5 STAR DPTC STR ON 9MTR. 145KG RCC POLE BOM-2B SHEET 3 OF 4	
Sub	<i>[Signature]</i> DGM (QS&S)		
	SCALE: N.T.S		DRG.NO.BESCOM/GM/QS&S/71 REV-002 DATED:24-11-2018



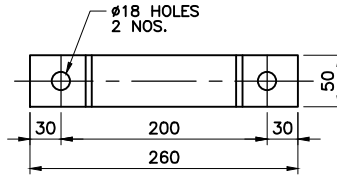
25) H-FRAME ANGLE TYPE-A1 & A2



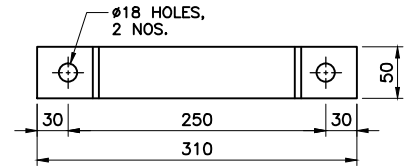
32) H-FRAME ANGLE SUPPORTING ANGLE (45x45x5)



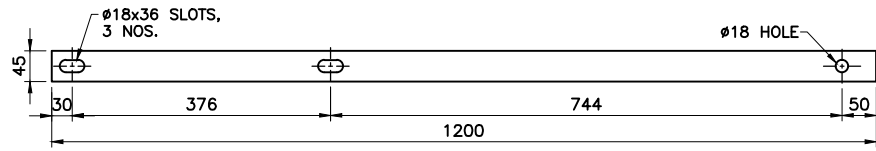
26) HORIZONTAL ANGLE FOR H-FRAME FIXING (65x65x6)



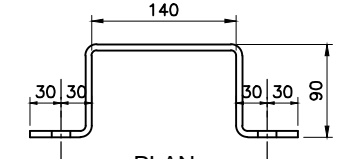
ELEVATION



ELEVATION

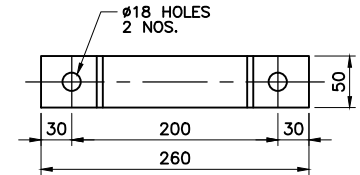


28) GOS OPERATING PIPE SUPPORTING ANGLE (45x45x5)



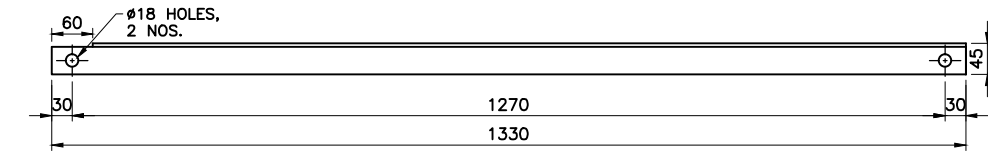
PLAN

31) BACK CLAMP FOR GOS OPERATING PIPE SUPPORTING ANGLE (50x6)

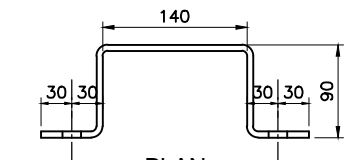


ELEVATION

29) BACK CLAMP FOR H-FRAME BRACE ANGLE SUPPORTING ANGLE (50x6)

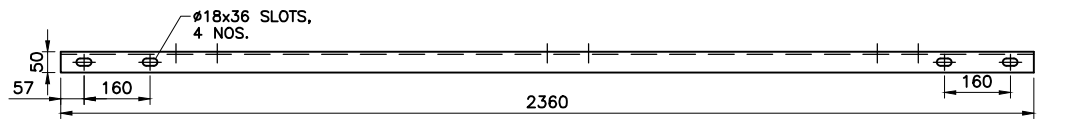


27) BRACE ANGLE FOR H-FRAME FIXING (45x45x5)

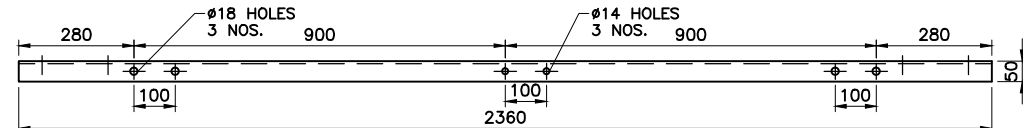


PLAN

30) BACK CLAMP FOR HORIZONTAL ANGLE FOR H-FRAME FIXING (50x6)




ELEVATION



PLAN

19) LA MOUNTING ANGLE (50x50x6)

	Signatures	All dimensions are in mm unless otherwise stated.	 <b>BESCOM</b>
Chd	<i>[Signature]</i> AGM (QS&S)	<b>FABRICATION DETAILS FOR 250KVA 4/5 STAR DPTC STR ON 9MTR. 145KG RCC POLE BOM-2B SHEET 4 OF 4</b>	
Sub	<i>[Signature]</i> DGM (QS&S)		<i>[Signature]</i> General Manager, (Elec.) QS&S
	SCALE: N.T.S		DRG.NO.BESCOM/GM/QS&S/71 REV-002 DATED:24-11-2018