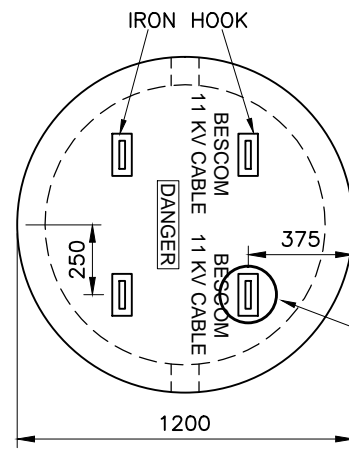


**SECTIONAL ELEVATION**

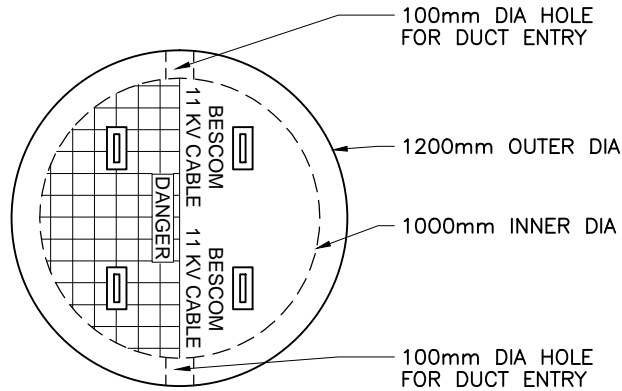


**RCC COVER DETAIL**

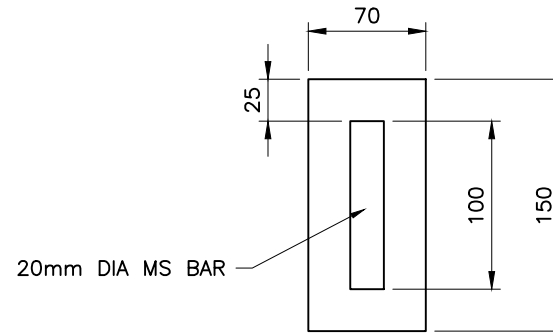
**SPECIFICATION:-**

1. CONCRETE MIXER :- M40 GRADE, WITH STEEL ROD OF 12mm AT A SPACE OF 4 INCH.
2. LOAD WITH STABILITY :- MINIMUM 20 TONNE.
3. CHAMBER HAS TO BE PLACED ON THE PCC FOUNDATION OF M-20 GRADE OF MINIMUM THICKNESS OF 200mm.



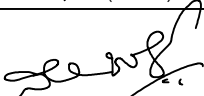
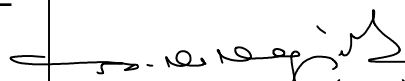
**DETAIL-A**



**PLAN**



**DETAIL -A**

	Signatures	All dimensions are in mm unless otherwise stated.	 <b>BESCOM</b>
Chd	 AGM (QS&S)	<b>DETAILS OF CHAMBER / MANHOLE ARRANGEMENT FOR LAYING OF OPTICAL FIBER CABLE</b>	
Sub	 DGM (QS&S)		 General Manager, (Elec.) QS&S
SCALE: N.T.S			DRG.NO.BESCOM/GM/QS&S/78 REV-002 DATED:24-11-2018