

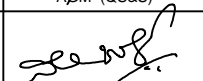
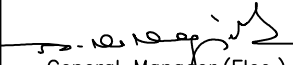
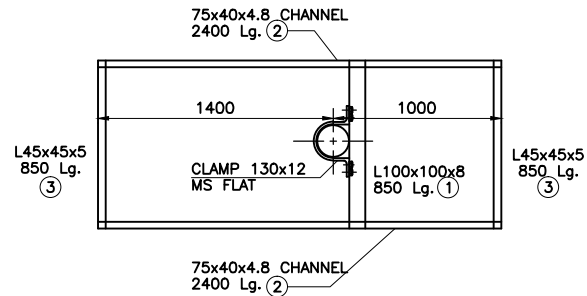


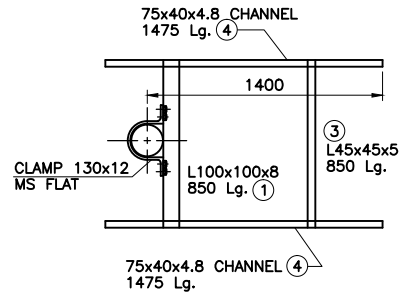
**NOTES:-**

1. DETAILS OF MOUNTING OF GOS, L.A., H.G.FUSE AND TRANSFORMER ARE SHOWN IN SHEET-2.
2. ALL HOLES ARE 18mm  $\phi$  FOR 16mm  $\phi$  BOLTS

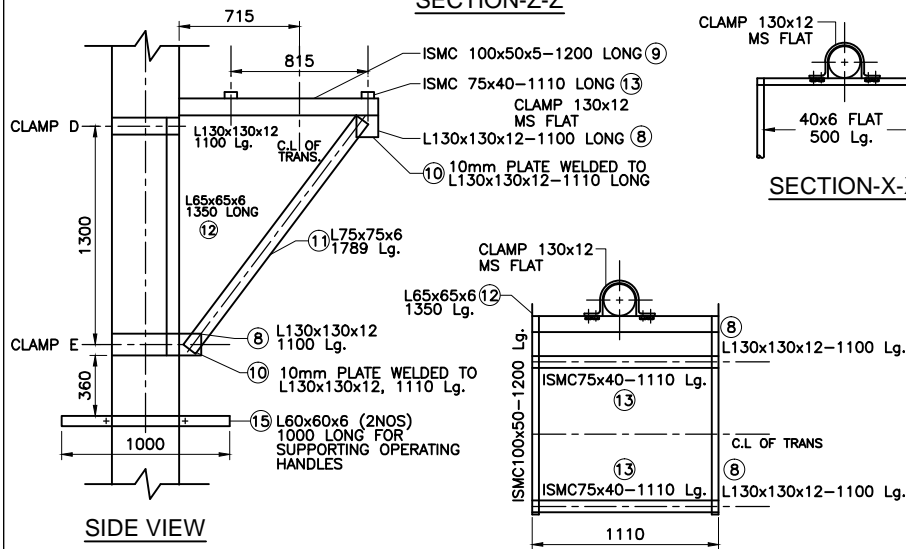
|              |   |  |   |
|--------------|---|--|---|
|              | Signatures  | All dimensions are in mm unless otherwise stated.  | <br>BESCOM                           |
| Chd          | <br>AGM (QS&S) | 3 GOS SYSTEM<br>WITH TRANSFORMER<br>SEATING ANGLE ON 11M LONG<br>TUBULAR SPUN POLE<br>FOR TRS UPTO 250 KVA<br>BOM-10<br>(SHEET 1 OF 3) | Approved:   |
| Sub          | <br>DGM (QS&S) |  | <br>General Manager, (Elec.)<br>QS&S |
| SCALE: N.T.S |   |  | DRG.NO.BESCOM/GM/QS&S/67<br>REV-003 DATED:04-05-2020  |



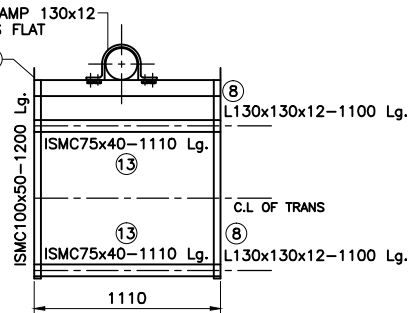
SECTION-Y-Y



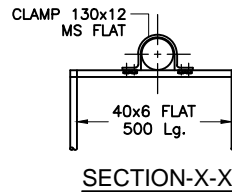
SECTION-Z-Z



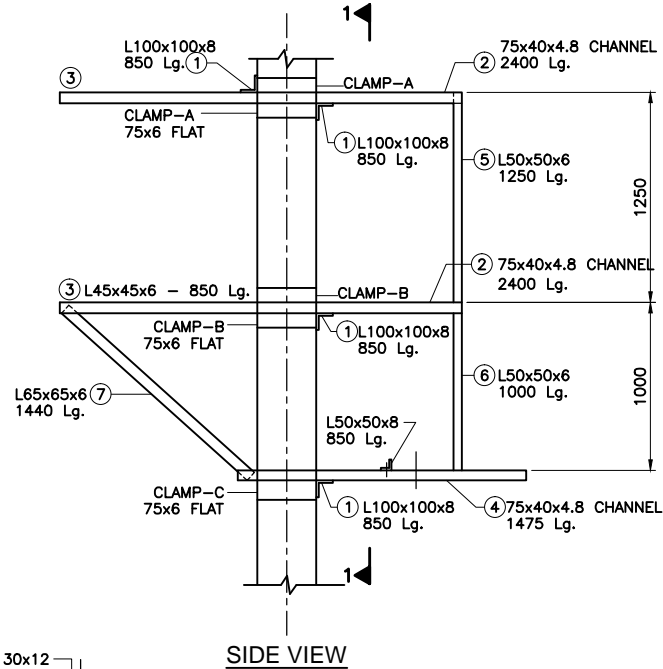
SIDE VIEW



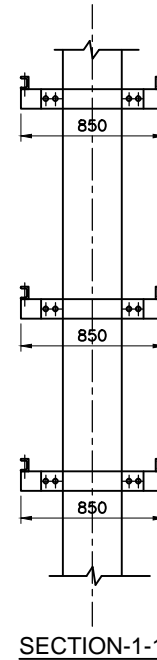
SECTION-XX




SECTION-X-X

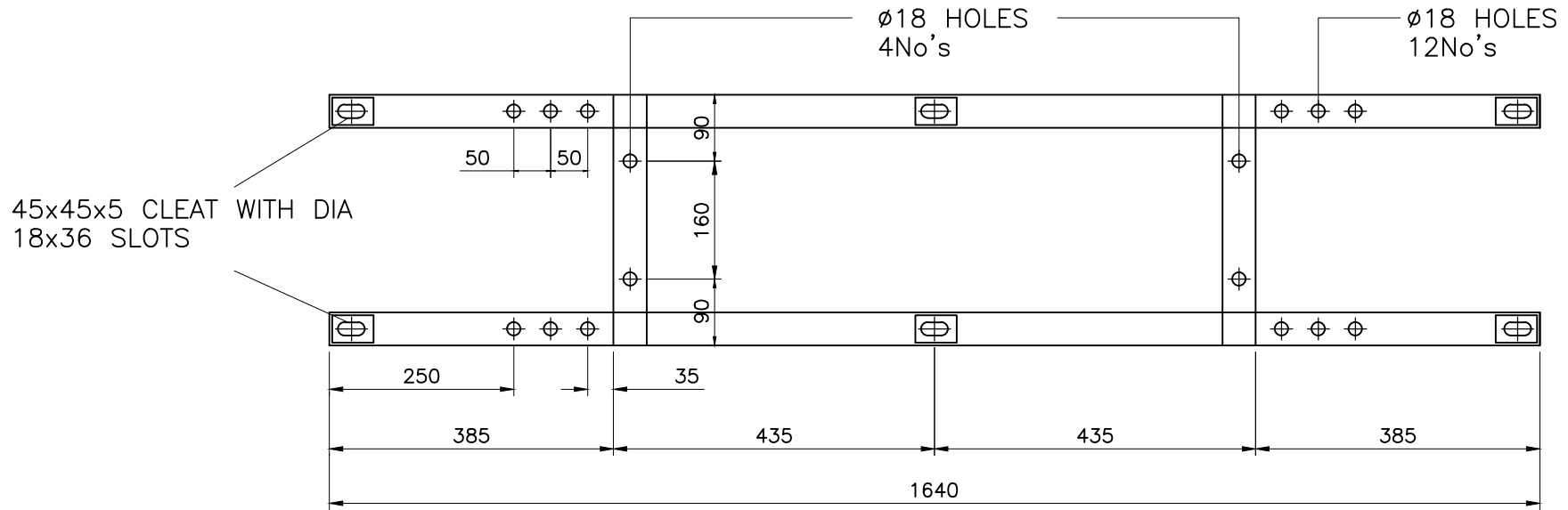


SIDE VIEW



SECTION-1-1

| Signatures   |                                  | All dimensions are in mm unless otherwise stated.      | <br><b>BESCOM</b> |
|--------------|----------------------------------|--|--|
| Chd          | <i>[Signature]</i><br>AGM (QS&S) |  |  |
| Sub          | <i>[Signature]</i><br>DGM (QS&S) | <i>[Signature]</i><br>General Manager, (Elec.)<br>QS&S |  |
| SCALE: N.T.S |                                  | DRG.NO.BESCOM/GM/QS&S/67<br>REV-003 DATED:04-05-2020   |  |



14 H-FRAME

**BILL OF MATERIALS - 10**

SPMT For UG Cable network (Having 3 Nos H Frame with Transformer seating and seating angle support x-arm) for 11 Mtr Spun Pole for 25 kVA 4/5 Star Rated  
Transformer Drg No. BESCO / GM / QS&S / 67 Dtd 24.11.2018

| Sl No                                  | Size of the steel section  | Length (in mm) | Qty (in Nos)  | Kgs/M tr | Total Wt |
|--|--|----------------|---------------|----------|----------|
| <b>TOP Bracket</b>                     |  |                |               |          |          |
| 1                                      | 100x100x8mm MS Angle   | 850            | 5             | 12.10    | 51.43    |
| 2                                      | 75x40x4.8mm MS Channel (MC75/MCP75)  | 2400           | 4             | 7.14     | 68.54    |
| 3                                      | 45x45x5mm MS Angle   | 850            | 5             | 3.40     | 14.45    |
| 4                                      | 75x40x4.8mm MS Channel (MC75/MCP75)  | 1475           | 2             | 7.14     | 21.06    |
| 5                                      | 50x50x6mm MS Angle   | 1250           | 2             | 4.50     | 11.25    |
| 6                                      | 50x50x6mm MS Angle   | 1000           | 2             | 4.50     | 9.00     |
| 7                                      | 65x65x6mm MS Angle   | 1440           | 2             | 5.80     | 16.70    |
| <b>Transformer Center</b>              |  |                |               |          |          |
| 8                                      | 130x130x12mm Angle   | 1110           | 1             | 23.40    | 25.97    |
| 9                                      | 100x50x5mm MS Channel (MC100/MCP100)   | 1200           | 2             | 9.56     | 22.94    |
| 10                                     | 130x130x12mm MS Angle (with side plate)  | 1110           | 2             | 23.40    | 51.95    |
| 11                                     | 75x75x6mm MS Angle   | 1789           | 2             | 6.80     | 24.33    |
| 12                                     | 65x65x6mm MS Angle   | 1350           | 2             | 5.80     | 15.66    |
| 13                                     | 75x40x4.8mm MS Channel (MC75/MCP75)  | 1110           | 2             | 7.14     | 15.85    |
| <b>GOS Mounting Structure (Ladder)</b> |  |                |               |          |          |
| 14                                     | 45x45x5mm MS Angle   | 1640           | 6             | 3.40     | 33.46    |
| 15                                     | 45x45x5mm MS Angle (Cleat)   | 60             | 18            | 3.40     | 3.67     |
| 16                                     | 40x40x5mm MS Angle   | 335            | 6             | 3.00     | 6.03     |
| 17                                     | Round clamps of different sizes made out of MS flats suitable for fixing the above structural materials to the pole. |                |               |          |          |
|  | a) 130x12 MS Flat  | 1000           | 2             | 12.20    | 24.40    |
|  | b) 75x6 MS Flat  | 1000           | 8             | 3.53     | 28.24    |
| 18                                     | MS Hexagonal bolts, nuts Full Thread and washers of different sizes to sufficient in quantity for fixing             |                | 17kgs Approx. |          | 17.00    |

Total in Kgs 461.94

|     |              |  |   |
|-----|--------------|--|---|
|     | Signatures   | All dimensions are in mm unless otherwise stated.  |   |
| Chd |              | 3 GOS SYSTEM<br>WITH TRANSFORMER<br>SEATING ANGLE ON 11M LONG<br>TUBULAR SPUN POLE<br>FOR TRS UPTO 250 KVA<br>BOM-10<br>(SHEET 3 OF 3) | BESCO   |
| Sub |              |  | Approved:<br>                                       |
|     | SCALE: N.T.S |  | General Manager, (Elec.)<br>QS&S                    |
|     |              |  | DRG.NO.BESCO/GM/QS&S/67<br>REV-003 DATED:04-05-2020 |