

WIRING DIAGRAM ALONG WITH TTB

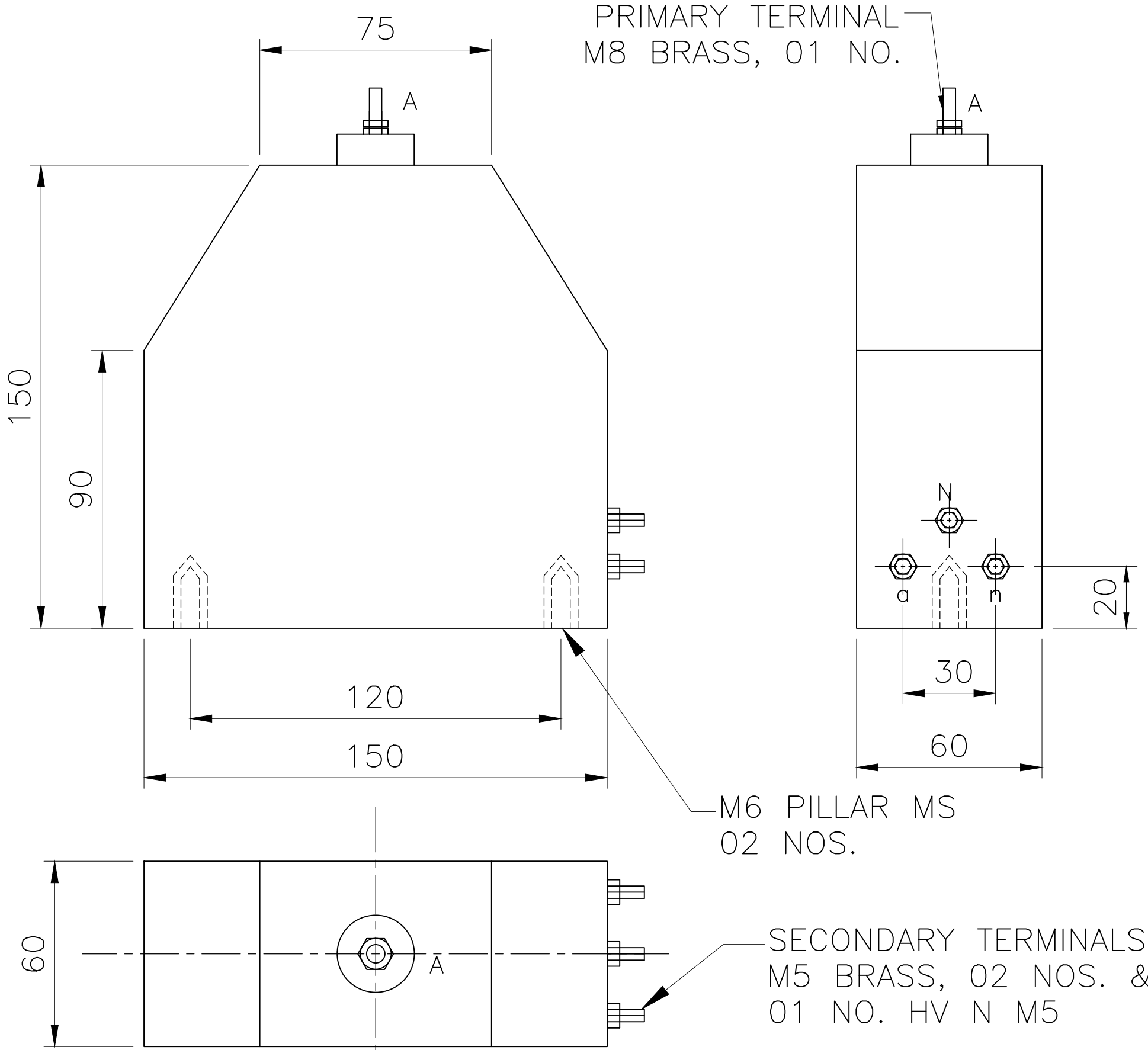
NOTES:

1. ALL DIMENSIONS ARE IN mm.
2. SHEET STEEL THICKNESS 1.6MM(Min).
3. CTs WILL BE OF SINGLE PHASE DRY TYPE & PTs WILL BE OF 1 ϕ , DRY TYPE.
4. FINISH : POWDER COATED WITH PURE POLYESTER BASED POWDER WITH THICKNESS 50 MICRONS OF DA GRAY.
5. ALL HARDWARE EXPOSED TO ATMOSPHERIC CONDITIONS ARE OF SS INCLUDING SEALING BOLTS
6. CABLE CLAMP SUITABLE FOR 300 Sq.mm
7. CT SECONDARY STAR POINT EARTHED IN CT/PT CHAMBER.
8. 01 No. SEALING BOLTS WILL BE PROVIDED ON THE DOOR OF THE METER CHAMBER
01 No. WILL BE PROVIDED ON DOOR OF CT/PT CHAMBER
9. LT RESIN CAST CTS 3 Nos. AS PER IS16227 PART-II/2016, BURDEN 2.5VA, CLASS 0.2S, BIL-0.66/3 kV.
10. LT RESIN CAST PTS 3 Nos. AS PER IS16227 PART-III/2016, RATIO $440V/\sqrt{3}$ 110V/ $\sqrt{3}$ BURDEN 5 VA, CLASS 0.2 VOLTAGE FACTOR 1.2 TIMES FOR CONTINUOUS, BIL-0.66/3KV.
11. SECONDARY WIRING SHALL BE COLOUR CODED WITH 4Sqmm COPPER SHEATHED INSULATED WIRE FOR CT'S AND 2.5Sqmm WIRE FOR PT'S
12. THE DANGER BOARD SHALL BE MADE FROM MILD STEEL OF MIN 1.6MM THICK AND SHALL BE VITREOUS ENAMELLED WHITE LETTERS, FIGURES AND THE CONVENTIONAL SKULL AND BONES IN SIGNAL RED COLOUR.

BILL OF MATERIALS:

Sl. No	DESCRIPTION	QUANTITY	PARTICULARS	MAKE
1.	ELECTRONIC TRI VECTOR METER	01 No.	3 ϕ , 4WIRE, 63.5V/1A, 0.2S	APPROVED MAKE
2.	TEST TERMINAL BLOCKS	01 No.	3 ϕ , 4WIRE	APPROVED MAKE
3.	440V /110V, POTENTIAL TRANSFORMERS $\sqrt{3}$ $\sqrt{3}$	03 Nos.	5VA, 0.2 CLASS	APPROVED MAKE
4.	CURRENT TRANSFORMERS 50/1A, 75/1A, 100/1A, 125/1A, 150/1A, 200/1A, 225/1A & 250/1A	03 Nos.	2.5VA, 0.2S CLASS	APPROVED MAKE
5.	BUS BAR SUPPORT	08 Nos.	EPOXY RESIN CAST	
6.	BUS BARS	-----	30x8mm ALLUMINIUM BUS BAR WITH R Y B MARKING	





Signatures		All dimensions are in mm unless otherwise stated.	
Chd		GA DRAWING FOR LT METERING CUBICLE FROM 50KW TO 150KW SHEET 1 OF 3	 BESCOM Approved: General Manager, (Elec.) QS&S
Sub			
DGM (QS&S)			
SCALE: N.T.S		DRG.NO.BESCOM/GM/QS&S/81 REV-000 DATED:30-03-2022	

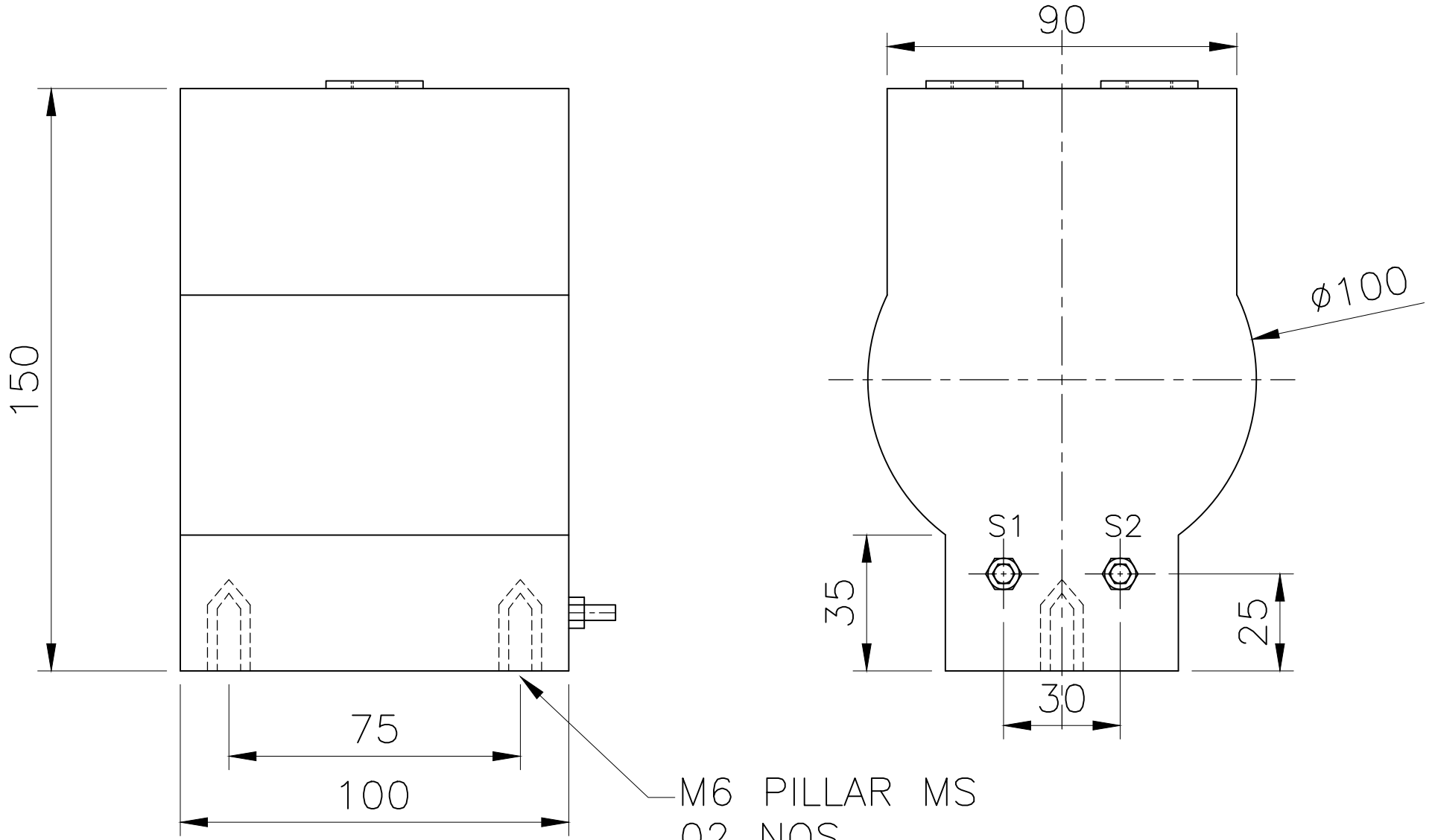


**INDOOR RESIN CAST 1PHASE
LT POTENTIAL TRANSFORMER**

SPECIFICATIONS:

Ratio	: $\frac{440V}{\sqrt{3}}$ / $\frac{110V}{\sqrt{3}}$
Burden	: 5 VA
Acc. Class	: 0.2
Ins. Level	: 0.66 / 3 KV
Vtg. Factor	: 1.2 Cont.,
Frequency	: 50 Hz
App. Std	: IS 16227 / 2016
Year of Mfg.	:
Sl. No	:

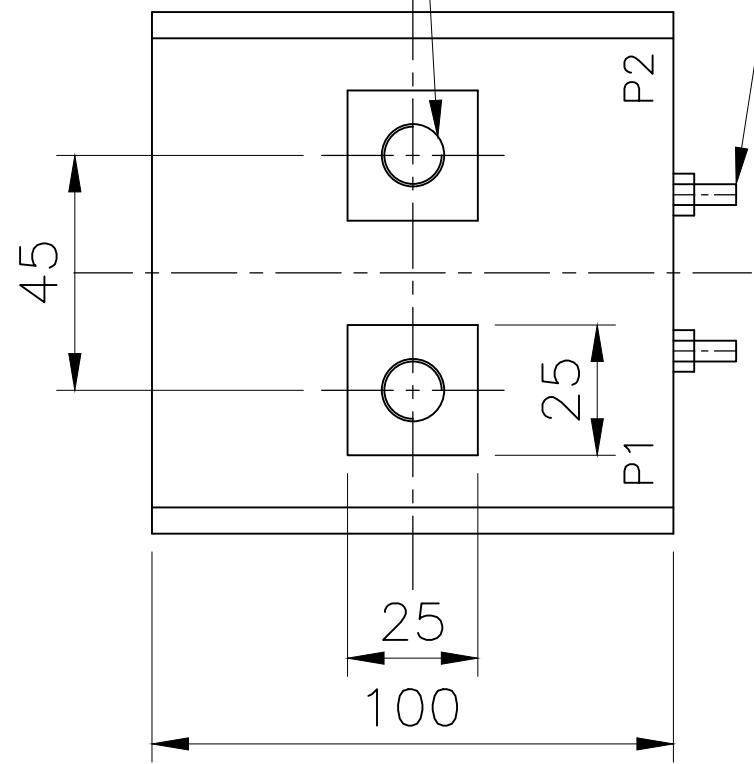
	Signatures	All dimensions are in mm unless otherwise stated.	 BESCOM
Chd	 AGM (QS&S)	GA DRAWING FOR LT METERING CUBICLE FROM 50KW TO 150KW SHEET 2 OF 3	
Sub	 DGM (QS&S)		 General Manager, (Elec.) QS&S
SCALE: N.T.S			DRG.NO.BESCOM/GM/QS&S/81 REV-000 DATED:30-03-2022



M6 PILLAR MS
02 NOS.

PRIMARY TERMINALS
M10 02 NOS.

SECONDARY TERMINALS
M5, BRASS, 02 NOS.



**INDOOR RESIN CAST WOUND
TYPE CURRENT TRANSFORMER**

SL. NO.	CT RATIO	STC RATING
1.	50/1A	1.5 kA/1SEC
2.	75/1A	2.25 kA/1SEC
3.	100/1A	3 kA/1SEC
4.	125/1A	3.75 kA/1SEC
5.	150/1A	4.5 kA/1SEC
6.	175/1A	5.25 kA/1SEC
7.	200/1A	6 kA/1SEC
8.	225/1A	6.75 kA/1SEC
9.	250/1A	7.5 kA/1SEC

Technical Specifications:

Ratio	: 50/1A to 250/1A
Burden	: 2.5 VA
Acc. Class	: 0.2S
I.S.F	: ≤ 5
Rated STC	: As per Table
Ins. Level	: 0.66 / 3KV
Frequency	: 50Hz
App.STD	: IS 16227/2016
Year of Mfg.	: 2022
Sl. No.	:

Signatures	
Chd	 AGM (QS&S)
Sub	 DGM (QS&S)
SCALE: N.T.S	

All dimensions are in mm unless otherwise stated.

**GA DRAWING
FOR LT METERING
CUBICLE FROM
50KW TO 150KW
SHEET 3 OF 3**

ಬೆಂಗಳೂರು
B
BESCOM

Approved:
General Manager, (Elec.)
QS&S

DRG.NO.BESCOM/GM/QS&S/81
REV-000 DATED:30-03-2022